

UK's LEADING SUPPLIER IN

# WELFARE UNITS & PORTABLE SANITATION

Catalogue



For more information on our products and services,  
call us on **01375 398 398**, email [sales@davlav.com](mailto:sales@davlav.com) or visit [davlav.com](http://davlav.com)

## Welcome

**“We value your business and provide the very best in customer service and personal attention to all our customers.”**

Welcome to the Davlav catalogue. This will help guide you through many of our products and the specification for each, helping you decide on the right unit for your requirements.

Davlav offer a wide range of products needed to comply with health and safety on all building and construction sites. In reaction to the high demand we have experienced over previous years we have increased the range of products we offer.

If the units you require are not shown in the catalogue please ask one of our staff as our range is constantly evolving. We may well have what you require.

So I hope you enjoy our catalogue and look forward to working with you over the coming year.

**DAVLAV**  
WELFARE FACILITIES





100%  
Client  
Focused

## WELFARE

Mobile Welfare Units

Static Welfare Units

Portable Toilets

Tanker Services

## ACCOMMODATION

Canteens

Portable Offices

Drying Units

Toilet Blocks & Showers

Canteen & Drying Rooms

Storage Containers

Boot Wash Stations

Effluent Tanks

## MODULAR

# Easy guide to ordering

## Follow our quick guide below to get started

Davlav provide a first class service to ensure units are when and where you need them. As a trusted supplier of premium products to the construction industry clients can rest assured all orders will be delivered on time.

From a single portable toilet to a multi-unit office suite, Davlav have the stock and transportation ready to provide an unrivalled service. For urgent requirements Davlav offer a 24 hour service on most products.

Step 1

### Browse all the latest products

through our catalogue or visit:

[davlav.com](http://davlav.com)

Step 2

### Call one of our friendly, experienced staff

Who will guarantee you get the best price for your project

**01375 398 398**



For more information on our products and services, call us on **01375 398 398**, email [sales@davlav.com](mailto:sales@davlav.com) or visit [davlav.com](http://davlav.com)

**DAVLAV**

# Offering a nationwide service

Areas covered include:

- London
- Leeds
- Manchester
- Newcastle
- Birmingham
- Bristol
- Liverpool
- Wales



24hr  
response  
time



For more information on our products and services, call us on **01375 398 398**, email [sales@davlav.com](mailto:sales@davlav.com) or visit [davlav.com](http://davlav.com)

**DAVLAV**

We believe that a clear market focus is essential. **It is only by living in our customers' worlds that we can understand your challenges and spot opportunities to do things faster, safer, leaner and greener.** Once an opportunity is identified, our market specialists work with our supply chain and partners to bring to market innovative and specialist solutions.



# GP360 FUSION MOBILE WELFARE UNIT

## MOBILE WELFARE UNIT

- Compact towable, lightweight and anti-vandal
- Reductions in fuel usage, carbon emissions and service schedules
- Spacious and well equipped

The GP360 Fusion Mobile Welfare Unit provides all the benefits of the standard unit plus many Eco features to reduce running costs and carbon footprint. It is a lightweight and compact towable unit that meets HSE requirements and provides all your on-site needs in one small package. The unit can be run for 2 hours to gain 8 hours worth of heating and lighting. After 2 hours the unit will stop but heating and lighting continues to run saving money on fuel usage and reducing noise pollution.



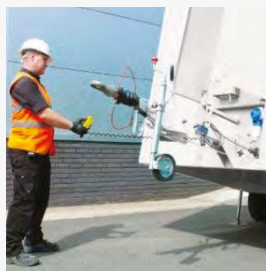
Dimensions	3655 (L) x 2300 (W) (mm)
Dimensions including towbar	4920 (L) x 2300 (W) (mm)
Gross Weight	1815kg
Generator	6KVA
Fuel Tank	58 Litres



## Offering secure, best in class working conditions



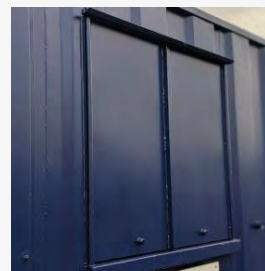
**Secure all steel construction**  
One of the most secure welfare units on the market with steel construction.



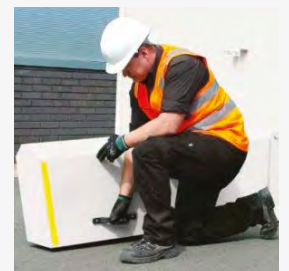
**Ground lowering mechanism**  
The unit can be secured at ground level when sited. This enables a safe entry and exit to the unit (without the requirement for steps).



**Highly secure double lock door**  
Steel personnel doors with built in locking mechanism and hidden hinges.



**High security window shutters**  
Steel shutters protect the windows, which are locked internally and can only be opened from inside the rest room.



**Swing operated secure nosecone**  
A swing operated nosecone hood protects and secures the towing coupling and once locked, prevents the unit from being removed from site.

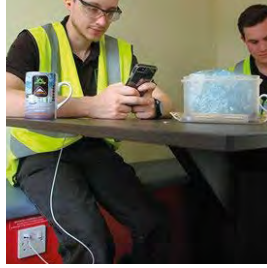
For more information on our products and services, call us on **01375 398 398**, email [sales@davlav.com](mailto:sales@davlav.com) or visit [davlav.com](http://davlav.com)

# Delivering comfort as standard

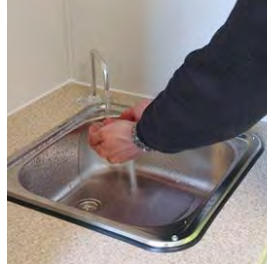
Comfortably able to accommodate six people, our GP360 Fusion units offer the following features as standard:



**Microwave and Kettle**  
Home comforts with a kettle and microwave. Please note appliances can only be operated when the generator is running.



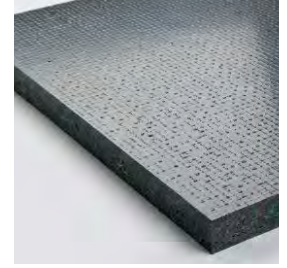
**Inverted powered socket c/w USB**  
Provides 20 amp 12 volt power suitable for charging mobile phones and laptops



**Stainless sink**  
A large stainless sink, perfect for washing all your plates and cups.



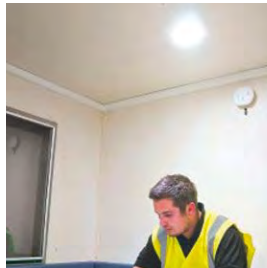
**Superior seating**  
Easy to clean with water and detergent seat bases. Made from WISA®-Multiwall, a high quality plastic coated wall lining panelling.



**Recycled non slip flooring**  
Non slip flooring and impervious against spillage of diesel fuel and other oils and detergents.



**Drying area**  
Provision for changing clothing and drying.



**LED lights with PIR sensors**  
Situating in the canteen, toilet and generator room our units have 12V LED PIR lighting which automatically senses movement turning lights on or off as required.



**Hot water on tap**  
Warm water is delivered instantaneously via a 12V pump.



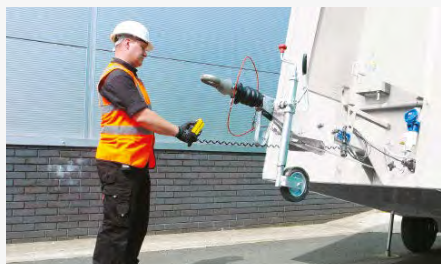
**Toilet wash area**  
The onboard heating system delivers warm water to the forearm wash basin in the toilet area.



**Comfortably seats 6 people**  
The units provide pleasant and safe working environments for up to 6 people.

## Secured in less than 3 minutes

Towed with ease and one man can manoeuvre and deploy the unit in 3 minutes. No other welfare unit deploys quicker. Three easy actions:



**Unhitch from towing vehicle and operate hydraulics using the push button controls**



**Lower the unit to the ground and unplug controls**



**Close & lock canopy to protect towing facility**

## HSE & CDM compliant welfare

We deliver units that are HSE & CDM compliant and have washing facilities, access to drinking water, sanitary conveniences, drying and changing facilities and of course an area for resting and eating.

All our welfare units are supplied with a current and relevant electrical installation test certificate.

- ✓ **Regulation Regulation 20** Sanitary Conveniences
- ✓ **Regulation Regulation 21** Washing Facilities
- ✓ **Regulation Regulation 22** Provision for Drinking Water
- ✓ **Regulation Regulation 23** Provision for Drying Clothing
- ✓ **Regulation Regulation 24** Facilities for Changing Clothing
- ✓ **Regulation Regulation 25** Facilities for Rest & to Eat Meals

For more information on our products and services, call us on **01375 398 398**, email [sales@davlav.com](mailto:sales@davlav.com) or visit [davlav.com](http://davlav.com)

**DAVLAV**



# Key Features of our GP360 Fusion in detail

Here is a detailed list of everything you need to know about the Davlav GP360 Fusion.



## Welfare Area

- Table and bench seating for up to 6 people
- 12V LED lighting with PIR
- Air blown heating system
- Microwave and kettle – both hard-wired
- Warm water supplied by on-board heating system
- Large stainless steel sink c/w warm water tap
- 12V cooler box (optional)
- Single inverter powered socket outlet
- Consumer board c/w RCD & MCB's
- Generator start panel c/w hour run meter
- Fresh & waste water containers (20 Ltr cap each)
- 12V socket and USB
- Carbon monoxide monitor and smoke alarm
- Paper towels, liquid soap and cup dispenser
- 130Amp hour battery/ charger & battery guard

## External Construction

- Steel profiled panels to side walls and roof.
- Aluminium sliding Window with steel shutter
- Steel personnel doors to three separate areas (Toilet, Warm Room/Generator and Canteen)
- Single axle with unique Groundhog hydraulic system to enable the unit to be lowered to Ground level with hand held control
- Hydraulically damped overrun Tow coupling with 40mm
- Eye 50mm ball hitch and jockey wheel (50mm ball hitch optional)
- Steel nose cone shroud c/w lock to secure whilst lowered on site
- Threaded bushed set in base rail to enable lifting rings to be positioned for low level lifting
- Fully hot-dipped galvanised chassis

## Flooring

- Recycled Non-Slip Flooring

## Internal Construction

- Lined and Insulated in GRP, panels with block insulation inserts

## Toilet Area

- Plastic recirculating toilet c/w ventilation pipe
- Toilet tank size: 280L
- Toilet roll holder
- 12V LED lighting with PIR
- Forearm pedestal wash basin c/w warm water tap
- Warm water supplied by on-board heating system
- Liquid soap & paper towel dispenser

## Warm Room / Generator Area

- 12V LED lighting with PIR
- Air blown heating system
- Coat hooks
- Ventilation panel
- 6kVA diesel generator with exhaust venting
- Access to fuel tank with separate fuel level gauge (58 Ltr cap)
- Fuel Active system
- Generator start battery
- Fuel tank runtime = approx. 25 hours

# GP360D STANDARD MOBILE WELFARE UNIT

## MOBILE WELFARE UNIT

- Compact towable, lightweight and anti-vandal
- Spacious and well equipped
- Meets HSE & CDM requirements

The single axle GP360D Welfare unit is a lightweight and compact towable unit that meets HSE requirements and provides all your on-site needs in one small package. The units are suitable for accommodating six persons, which provides pleasant and safe working environments, ideal for all contractors.



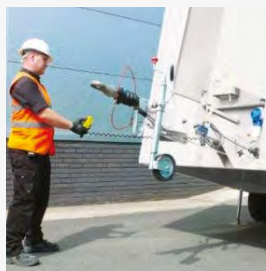
Dimensions	<b>3655 (L) x 2300 (W) (mm)</b>
Dimensions including towbar	<b>4920 (L) x 2300 (W) (mm)</b>
Gross Weight	<b>1800kg</b>
Generator	<b>6KVA</b>
Fuel Tank	<b>58 Litres</b>



## Offering secure, best in class working conditions



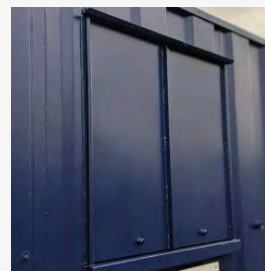
**Secure all steel construction**  
One of the most secure welfare units on the market with steel construction.



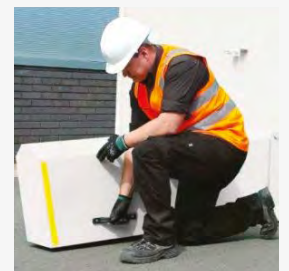
**Ground lowering mechanism**  
The unit can be secured at ground level when sited. This enables a safe entry and exit to the unit (without the requirement for steps).



**Highly secure double lock door**  
Steel personnel doors with built in locking mechanism and hidden hinges.



**High security window shutters**  
Steel shutters protect the windows, which are locked internally and can only be opened from inside the rest room.



**Swing operated secure nosecone**  
A swing operated nosecone hood protects and secures the towing coupling and once locked, prevents the unit from being removed from site.

For more information on our products and services, call us on **01375 398 398**, email [sales@davlav.com](mailto:sales@davlav.com) or visit [davlav.com](http://davlav.com)

# Delivering comfort as standard

Comfortably able to accommodate six people, the Davlav GP360D unit offers the following features as standard:



#### Microwave and Kettle

Home comforts with a kettle and microwave. Please note appliances can only be operated when the generator is running.



#### Stainless sink

A large stainless sink, perfect for washing all your plates and cups.



#### Superior seating

Easy to clean with water and detergent seat bases. Made from from WISA®-Multiwall, a high quality plastic coated wall lining panelling.



#### Drying area

Provision for changing clothing and drying.



#### Hot water on tap

Warm water is delivered instantaneously via a 12V pump.



#### Toilet wash area

The onboard heating system delivers warm water to the forearm wash basin in the toilet area.

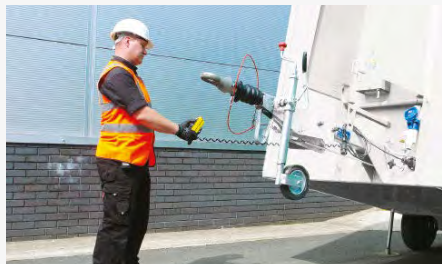


#### Comfortably seats 6 people

The units provide pleasant and safe working environments for up to 6 people.

## Secured in less than 3 minutes

Towed with ease and one man can manoeuvre and deploy the unit in 3 minutes. No other welfare unit deploys quicker. Three easy actions:



Unhitch from towing vehicle and operate hydraulics using the push button controls



Lower the unit to the ground and unplug controls



Close & lock canopy to protect towing facility

## HSE & CDM compliant welfare

We deliver units that are HSE & CDM compliant and have washing facilities, access to drinking water, sanitary conveniences, drying and changing facilities and of course an area for resting and eating.

All our welfare units are supplied with a current and relevant electrical installation test certificate.

- ✓ **Regulation Regulation 20** Sanitary Conveniences
- ✓ **Regulation Regulation 21** Washing Facilities
- ✓ **Regulation Regulation 22** Provision for Drinking Water
- ✓ **Regulation Regulation 23** Provision for Drying Clothing
- ✓ **Regulation Regulation 24** Facilities for Changing Clothing
- ✓ **Regulation Regulation 25** Facilities for Rest & to Eat Meals

For more information on our products and services, call us on **01375 398 398**, email [sales@davlav.com](mailto:sales@davlav.com) or visit [davlav.com](http://davlav.com)

**DAVLAV**

# Key features of our GP360D in detail

Here is a detailed list of everything you need to know about the Davlav GP360D.



## Welfare Area

- Table and bench seating for up to 6 people
- Hard-wired Microwave and kettle
- Fresh and waste water containers (20L cap each)
- Warm water supplied by on-board heating system
- Large stainless steel sink c/w warm water tap
- 12V pump for water system
- 500W electric wall mounted heater
- 240V 600mm strip light
- Single 2Amp socket outlet
- Consumer board c/w RCD & MCB's
- Generator control panel with hour run meter
- Paper towels, liquid soap and cup dispenser
- Carbon monoxide monitor and smoke alarm
- Fresh drinking water container (20L)
- High level vent

## External Construction

- Steel profiled panels to side walls and roof.
- Aluminium sliding Window with steel shutter
- Steel personnel doors to three separate areas (Toilet, Warm Room/Generator and Canteen)
- Single axle with unique Groundhog hydraulic system to enable the unit to be lowered to Ground level with hand held control
- Hydraulically damped overrun Tow coupling with 40mm
- Eye 50mm ball hitch and jockey wheel (50mm ball hitch optional)
- Steel nose cone shroud c/w lock to secure whilst lowered on site
- Threaded bushed set in base rail to enable lifting rings to be positioned for low level lifting
- Fully hot-dipped galvanised chassis

## Flooring

- 1.5mm vinyl polyfloor

## Internal Construction

- Lined and Insulated in GRP, panels with block insulation inserts

## Toilet Area

- Plastic recirculating toilet c/w ventilation pipe
- Toilet tank size: 280L
- Toilet roll holder
- 12V LED lighting with PIR
- Forearm pedestal wash basin c/w warm water tap
- Warm water supplied by on-board heating system
- Liquid soap & paper towel dispenser

## Warm Room / Generator Area

- Bulkhead light 240V
- 240V tubular heater
- Coat hooks
- Ventilation panel
- 6kVA diesel generator with exhaust venting through roof area
- Access to fuel tank with separate fuel level gauge (fuel tank capacity = 58L)
- Fuel tank runtime = approx. 25 hours
- Fuel Active system

# GP500D STANDARD MOBILE WELFARE UNIT

## MOBILE WELFARE UNIT

- Compact towable, lightweight and anti-vandal
- Spacious and well equipped
- Comfortably sits up to 10

The Davlav double axle GP500D Welfare unit is a compact towable unit. Compact and lightweight with a well equipped seating and facilities area. HSE compliant, the units are suitable for accommodating up to 10 people, which provides pleasant and safe working environments, drying area and wash room facilities, ideal for all contractors.



Dimensions	5000 (L) x 2300 (W) x 2800 (H) (mm)
Dimensions including towbar	6320 (L) x 2300 (W) x 2800 (H) (mm)
Gross Weight	2515kg
Generator	6KVA
Fuel Tank	58 Litres



SEATING FOR UP TO 10 PEOPLE



SPEEDY DELIVERY

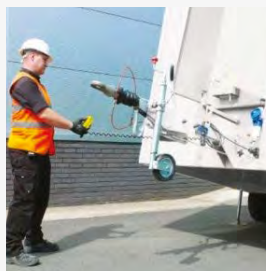


QUALITY SERVICE GUARANTEED

## Offering secure, best in class working conditions



**Secure all steel construction**  
One of the most secure welfare units on the market with steel construction.



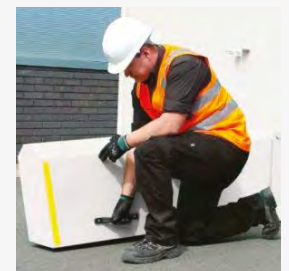
**Ground lowering mechanism**  
The unit can be secured at ground level when sited. This enables a safe entry and exit to the unit (without the requirement for steps).



**Highly secure double lock door**  
Steel personnel doors with built in locking mechanism and hidden hinges.



**High security window shutters**  
Steel shutters protect the windows, which are locked internally and can only be opened from inside the rest room.



**Swing operated secure nosecone**  
A swing operated nosecone hood protects and secures the towing coupling and once locked, prevents the unit from being removed from site.

For more information on our products and services, call us on **01375 398 398**, email [sales@davlav.com](mailto:sales@davlav.com) or visit [davlav.com](http://davlav.com)

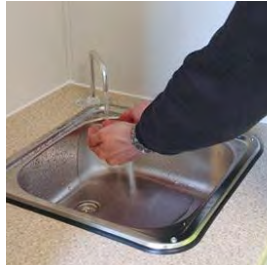
# Key features of our GP500D in detail

Comfortably able to accommodate ten people, our GP500D units offer the following features as standard:



### Microwave and Kettle

Home comforts with a kettle and microwave. Please note appliances can only be operated when the generator is running.



### Stainless sink

A large stainless sink, perfect for washing all your plates and cups.



### Drying area

Provision for changing clothing and drying.



### Enhanced interior

Seat bases constructed from WISA®-Multiwall, a high quality plastic coated wall lining panelling ideal for the construction industry. Easy to clean with water and detergent UV resistance to prevent colour fading Taint and odour free Elastic, non cracking coating Does not contain any chlorine Good chemical resistance (standard ISO 175) as required.



### Hot water on tap

Warm water is delivered instantaneously via a 12V pump.



### Toilet wash area

The onboard heating system delivers warm water to the forearm wash basin in the toilet area.



### Comfortably seats 10 people

The units are suitable for accommodating 10 people, which provides pleasant and safe working environments, ideal for rental companies and contractors.

## Secured in less than 3 minutes

Towed with ease and one man can manoeuvre and deploy the unit in 3 minutes. No other welfare unit deploys quicker. Three easy actions:



Push button controls to lower front and rear hydraulic rams



Rams lift unit from ground ready to release axle pins



Unit is lowered and canopy locked to protect towing facility

## HSE & CDM compliant welfare

We deliver units that are HSE & CDM compliant and have washing facilities, access to drinking water, sanitary conveniences, drying and changing facilities and of course an area for resting and eating.

All our welfare units are supplied with a current and relevant electrical installation test certificate.

- ✓ **Regulation Regulation 20** Sanitary Conveniences
- ✓ **Regulation Regulation 21** Washing Facilities
- ✓ **Regulation Regulation 22** Provision for Drinking Water
- ✓ **Regulation Regulation 23** Provision for Drying Clothing
- ✓ **Regulation Regulation 24** Facilities for Changing Clothing
- ✓ **Regulation Regulation 25** Facilities for Rest & to Eat Meals

For more information on our products and services, call us on **01375 398 398**, email [sales@davlav.com](mailto:sales@davlav.com) or visit [davlav.com](http://davlav.com)



# Key features of our GP500D in detail

Here is a detailed list of everything you need to know about the Davlav GP500D.



## Welfare Area

- Table and bench seating for up to 10 people
- Air blown heating system
- Microwave and kettle – both hard-wired
- Fresh & waste water containers (20 Ltr cap each)
- Large stainless steel sink c/w warm water tap
- 12V LED lighting with PIR
- Single 2amp socket
- 12V socket and USB
- Consumer board c/w RCD & MCB's
- Generator start panel c/w hour run meter
- Paper towels, liquid soap and cup dispenser
- Carbon monoxide monitor and smoke alarm
- High level vent
- Fresh drinking water container (20 Ltr)
- Volt meter
- 130Amp battery/ battery guard

## External Construction

- Steel profiled panels to side walls and roof
- Aluminium sliding Window with steel shutter
- Steel personnel doors to three separate areas (Toilet, Warm Room/Generator and Canteen)
- Twin axle with unique Groundhog hydraulic system to enable the unit to be lowered to Ground Level with hand held control
- Hydraulically damped overrun Tow coupling with 40mm
- Eye 50mm ball hitch and jockey wheel (50mm ball hitch optional)
- Steel nose cone shroud c/w lock to secure whilst lowered on site
- Threaded bushed set in base rail to enable lifting rings to be positioned for low level lifting
- Fully hot-dipped galvanised chassis

## Warm Room / Generator Area

- 12V LED lighting with PIR
- Air blown heating system
- Coat hooks
- Ventilation panel
- Generator start battery
- 6kVA diesel generator with exhaust venting
- Access to fuel tank with separate fuel level gauge (58 Ltr capacity)
- Fuel Active system
- Fuel tank runtime = approx. 25 hours

## Internal Construction

Lined and Insulated in GRP, panels with block insulation inserts

## Toilet Area

- Plastic recirculating toilet c/w ventilation pipe
- Forearm pedestal wash basin c/w warm water tap
- Toilet tank size: 280L
- Liquid soap & paper towel dispenser
- Toilet roll holder
- 12V LED lighting with PIR
- Warm water supplied by on-board heating system

## Flooring

Recycled Non-Slip Flooring

# GP500 FUSION MOBILE WELFARE UNIT

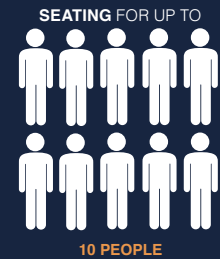
## MOBILE WELFARE UNIT

- Lightweight and anti vandal
- Reductions in fuel usage, carbon emissions and service schedules
- Comfortably sits up to 10 people

With accommodation for up to 10 people, large seating area and energy efficient heating and lighting, the Davlav GP500 Fusion is a flexible and cost effective welfare unit for all size sites. HSE compliant, this unit provides a pleasant and safe working environments, ideal for all contractors.



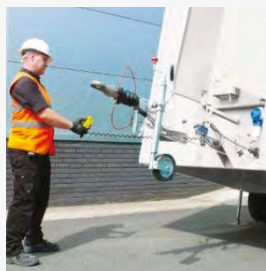
Dimensions	5000 (L) x 2300 (W) x 2800 (H) (mm)
Dimensions including towbar	6320 (L) x 2300 (W) x 2800 (H) (mm)
Gross Weight	2515 kg
Generator	6kVA
Fuel Tank	58 Litres



## Offering secure, best in class working conditions



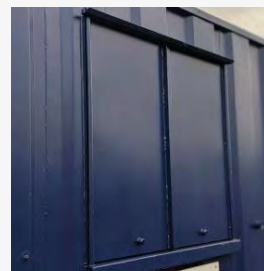
**Secure all steel construction**  
One of the most secure welfare units on the market with steel construction.



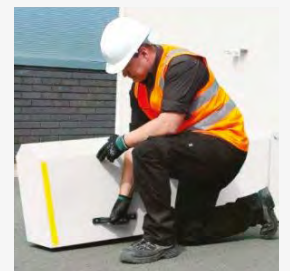
**Ground lowering mechanism**  
The unit can be secured at ground level when sited. This enables a safe entry and exit to the unit (without the requirement for steps).



**Highly secure double lock door**  
Steel personnel doors with built in locking mechanism and hidden hinges.



**High security window shutters**  
Steel shutters protect the windows, which are locked internally and can only be opened from inside the rest room.



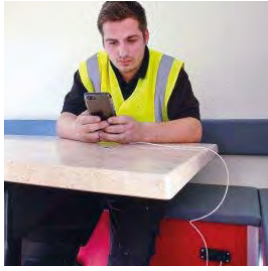
**Swing operated secure nosecone**  
A swing operated nosecone hood protects and secures the towing coupling and once locked, prevents the unit from being removed from site.

For more information on our products and services, call us on **01375 398 398**, email [sales@davlav.com](mailto:sales@davlav.com) or visit [davlav.com](http://davlav.com)



# Delivering comfort as standard

Comfortably able to accommodate ten people, our GP500 fusion units offer the following features as standard:



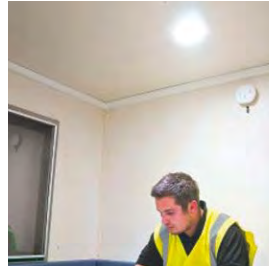
### 12 volt plug/USB

Provides 20 amp 12 volt power suitable for charging mobile phones and laptops only.



### Inverter power socket

Suitable for powering laptops, phone chargers and small printers.



### LED lights with PIR sensors

Situated in the canteen, toilet and generator room our units have 12V LED PIR lighting which automatically senses movement turning lights on or off as required.



### Enhanced interior

Seat bases constructed from WISA@-Multiwall, a high quality plastic coated wall lining panelling ideal for the construction industry. Easy to clean with water and detergent UV resistance to prevent colour fading Taint and odour free Elastic, non cracking coating Does not contain any chlorine Good chemical resistance (standard ISO 175) as required.



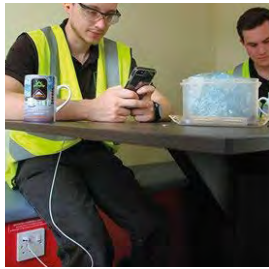
### Hot water on tap

Warm water is delivered instantaneously via a 12V pump.



### Toilet wash area

The onboard heating system delivers warm water to the forearm wash basin in the toilet area.



### Comfortably seats 10 people

The units are suitable for accommodating 10 people, which provides pleasant and safe working environments, ideal for rental companies and contractors.

## Secured in less than 3 minutes

Towed with ease and one man can manoeuvre and deploy the unit in 3 minutes. No other welfare unit deploys quicker. Three easy actions:



Push button controls to lower front and rear hydraulic rams



Rams lift unit from ground ready to release axle pins



Unit is lowered and canopy locked to protect towing facility

## HSE & CDM compliant welfare

We deliver units that are HSE & CDM compliant and have washing facilities, access to drinking water, sanitary conveniences, drying and changing facilities and of course an area for resting and eating.

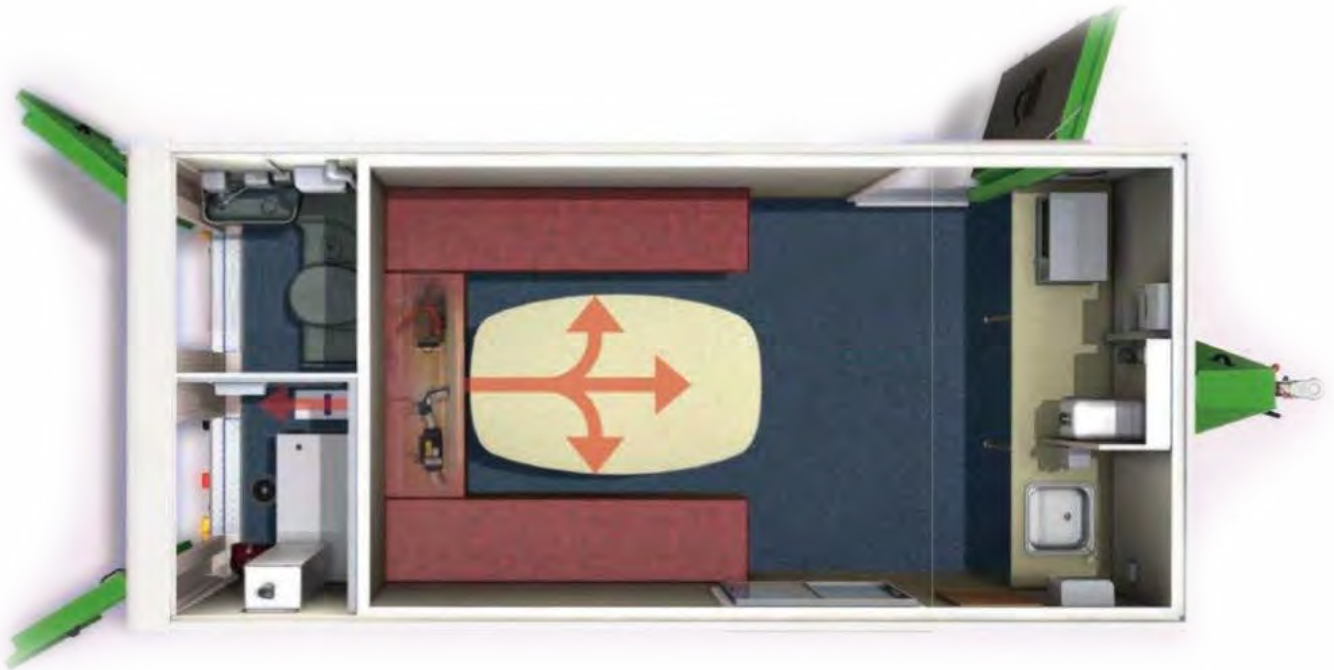
All our welfare units are supplied with a current and relevant electrical installation test certificate.

- ✓ **Regulation Regulation 20** Sanitary Conveniences
- ✓ **Regulation Regulation 21** Washing Facilities
- ✓ **Regulation Regulation 22** Provision for Drinking Water
- ✓ **Regulation Regulation 23** Provision for Drying Clothing
- ✓ **Regulation Regulation 24** Facilities for Changing Clothing
- ✓ **Regulation Regulation 25** Facilities for Rest & to Eat Meals

For more information on our products and services, call us on **01375 398 398**, email **sales@davlav.com** or visit **davlav.com**

# Key features of our GP500 Fusion in detail

Here is a detailed list of everything you need to know about the Davlav GP500 Fusion.



## Welfare Area

- Table and bench seating for up to 10 people
- Air blown heating system
- Microwave and kettle – both hard-wired
- Fresh & waste water containers (20 Ltr cap each)
- Large stainless steel sink c/w warm water tap
- 12V LED lighting with PIR
- Single 2amp socket
- 12V socket and USB
- Consumer board c/w RCD & MCB's
- Generator start panel c/w hour run meter
- Paper towels, liquid soap and cup dispenser
- Carbon monoxide monitor and smoke alarm
- High level vent
- Fresh drinking water container (20 Ltr)
- Volt meter
- 130Amp battery/ battery guard

## External Construction

- Steel profiled panels to side walls and roof
- Aluminium sliding Window with steel shutter
- Steel personnel doors to three separate areas (Toilet, Warm Room/Generator and Canteen)
- Twin axle with unique Groundhog hydraulic system to enable the unit to be lowered to Ground Level with hand held control
- Hydraulically damped overrun Tow coupling with 40mm
- Eye 50mm ball hitch and jockey wheel (50mm ball hitch optional)
- Steel nose cone shroud c/w lock to secure whilst lowered on site
- Threaded bushed set in base rail to enable lifting rings to be positioned for low level lifting
- Fully hot-dipped galvanised chassis

## Warm Room / Generator Area

- 12V LED lighting with PIR
- Air blown heating system
- Coat hooks
- Ventilation panel
- Generator start battery
- 6kVA diesel generator with exhaust venting
- Access to fuel tank with separate fuel level gauge (58 Ltr capacity)
- Fuel Active system
- Fuel tank runtime = approx. 25 hours

## Internal Construction

Lined and Insulated in GRP, panels with block insulation inserts

## Toilet Area

- Plastic recirculating toilet c/w ventilation pipe
- Forearm pedestal wash basin c/w warm water tap
- Toilet tank size: 280L
- Liquid soap & paper towel dispenser
- Toilet roll holder
- 12V LED lighting with PIR
- Warm water supplied by on-board heating system

## Road Lighting

12 Volt L.E.D detachable lighting board c/w mounting bracket and full L.E.D. road lighting which includes front and high level markers.

# GPO500 FUSION MOBILE WELFARE UNIT

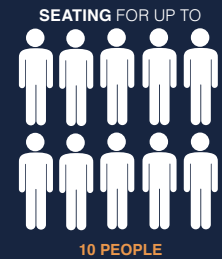
## MOBILE WELFARE UNIT

- Lightweight and anti vandal
- Reductions in fuel usage, carbon emissions and service schedules
- Seperate office area

The Davlav GPO500 Fusion mobile welfare unit features a separate office space. It can comfortably accommodate 8 people in the canteen area and a further 2 in the office feature. This versatile, towable HSE approved welfare unit is manufactured to use less generator energy, therefore cutting running costs



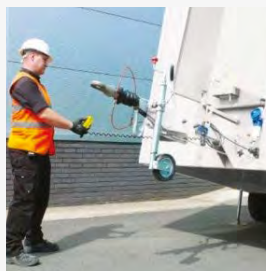
Dimensions	5000 (L) x 2300 (W) x 2800 (H) (mm)
Dimensions including towbar	6320 (L) x 2300 (W) x 2800 (H) (mm)
Gross Weight	2565kg
Generator	6KVA
Fuel Tank	58 Litres



## Offering secure, best in class working conditions



**Secure all steel construction**  
One of the most secure welfare units on the market with steel construction.



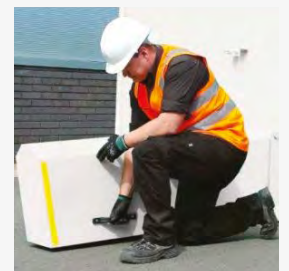
**Ground lowering mechanism**  
The unit can be secured at ground level when sited. This enables a safe entry and exit to the unit (without the requirement for steps).



**Highly secure double lock door**  
Steel personnel doors with built in locking mechanism and hidden hinges.



**High security window shutters**  
Steel shutters protect the windows, which are locked internally and can only be opened from inside the rest room.

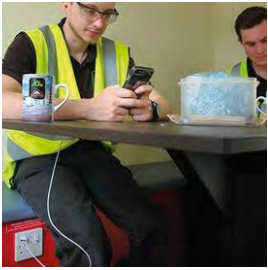


**Swing operated secure nosecone**  
A swing operated nosecone hood protects and secures the towing coupling and once locked, prevents the unit from being removed from site.

For more information on our products and services, call us on **01375 398 398**, email [sales@davlav.com](mailto:sales@davlav.com) or visit [davlav.com](http://davlav.com)

# Delivering comfort as standard

Comfortably able to accommodate up to 10 people (8 in the canteen + 2 in the office feature), our GPO500 Fusion units offer the following features as standard:



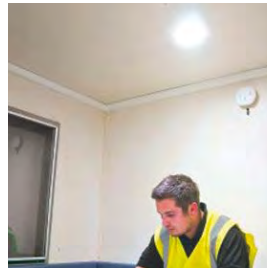
#### 12 volt plug/USB

Provides 20 amp 12 volt power suitable for charging mobile phones and laptops only.



#### Office area

Table and seating for up to 2 operatives.



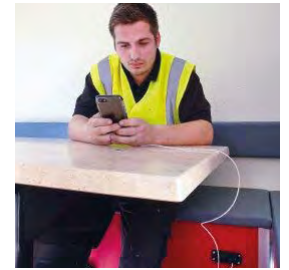
#### LED lights with PIR sensors

Situated in the canteen, toilet and generator room our units have 12V LED PIR lighting which automatically senses movement turning lights on or off as required.



#### Enhanced interior

Seat bases constructed from WISA®-Multiwall, a high quality plastic coated wall lining panelling ideal for the construction industry. Easy to clean with water and detergent UV resistance to prevent colour fading Taint and odour free Elastic, non cracking coating Does not contain any chlorine Good chemical resistance (standard ISO 175) as required.



#### Comfortably seats 10 people

The units are suitable for accommodating 10 people (8 in the canteen + 2 in the office), which provides pleasant and safe working environments, ideal for rental companies and contractors.



#### Hot water on tap

Warm water is delivered instantaneously via a 12V pump.



#### Toilet wash area

The onboard heating system delivers warm water to the forearm wash basin in the toilet area.

## Secured in less than 3 minutes

Towed with ease and one man can manoeuvre and deploy the unit in 3 minutes. No other welfare unit deploys quicker. Three easy actions:



Push button controls to lower front and rear hydraulic rams



Rams lift unit from ground ready to release axle pins



Unit is lowered and canopy locked to protect towing facility

## HSE & CDM compliant welfare

We deliver units that are HSE & CDM compliant and have washing facilities, access to drinking water, sanitary conveniences, drying and changing facilities and of course an area for resting and eating.

All our welfare units are supplied with a current and relevant electrical installation test certificate.

- ✓ **Regulation Regulation 20** Sanitary Conveniences
- ✓ **Regulation Regulation 21** Washing Facilities
- ✓ **Regulation Regulation 22** Provision for Drinking Water
- ✓ **Regulation Regulation 23** Provision for Drying Clothing
- ✓ **Regulation Regulation 24** Facilities for Changing Clothing
- ✓ **Regulation Regulation 25** Facilities for Rest & to Eat Meals

For more information on our products and services, call us on **01375 398 398**, email [sales@davlav.com](mailto:sales@davlav.com) or visit [davlav.com](http://davlav.com)

**DAVLAV**

# Key features of our GPO500 Fusion in detail

Here is a detailed list of everything you need to know about the Davlav GPO500 Fusion.



## External Construction

- Steel profiled panels to side walls and roof.
- Aluminium sliding Window with steel shutter
- Steel personnel doors to four separate areas (Toilet, Warm Room/Generator, Canteen and Office)
- Twin axle with unique Groundhog hydraulic system to enable the unit to be lowered to Ground level with hand held control
- Hydraulically damped overrun Tow coupling with 40mm
- Eye 50mm ball hitch and jockey wheel (50mm ball hitch optional)
- Steel nose cone shroud c/w lock to secure whilst lowered on site
- Threaded bushed set in base rail to enable lifting rings to be positioned for low level lifting
- Fully hot-dipped galvanised chassis

## Welfare Area

- Table and cushioned bench seating with back rests for up to 10 people
- Air blown heating system
- Microwave and kettle – both hard-wired
- Fresh & waste water containers (20 Ltr cap each)
- Large stainless steel sink c/w warm water tap
- 12V LED Lighting with PIR
- Inverter powered single socket
- Consumer board c/w RCD & MCB's
- Generator start panel c/w hour run meter
- Heater control
- Paper towels, liquid soap and cup dispenser
- High level vent
- Fresh drinking water container (20 Ltr)
- Storage area under counter
- Volt meter
- 130Amp battery/ battery guard
- 12V socket and USB socket
- Carbon monoxide monitor

## Internal Construction

- Lined and Insulated in GRP, panels with block insulation inserts

## Flooring

- Recycled Non-Slip Flooring

## Warm Room / Generator Area

- 12V LED lighting with PIR
- Air blown heating system
- Coat hooks
- Ventilation panel
- 6kVA diesel generator with exhaust venting
- Access to fuel tank with separate fuel level gauge (58 Ltr cap)
- Fuel Active system
- Generator start battery
- Fuel tank runtime = approx. 25 hours

## Warm Room / Generator Area

- Air blown heating system
- 12V LED lighting with PIR
- Inverter powered double socket
- 230V 6Amp double socket
- Desktop
- Document holder
- Notice and wipe clean board
- 2 Coat hooks
- Smoke alarm
- Side window c/w steel security shutters

## Toilet Area

- Plastic recirculating toilet c/w ventilation pipe
- Warm water supplied by on-board heating system
- Forearm pedestal wash basin c/w warm water tap
- Toilet tank size: 280L
- Liquid soap & paper towel dispenser
- Toilet roll holder
- 12V LED lighting with PIR
- Single coat hook

For more information on our products and services, call us on **01375 398 398**, email [sales@davlav.com](mailto:sales@davlav.com) or visit [davlav.com](http://davlav.com)



# SW6100 FUSION STATIC WELFARE UNIT

## STATIC WELFARE UNIT

- Pleasant and comfortable
- Seperate office space
- Suitable for long term projects as cost effective
- Seating for up to 8 people
- High security

The Davlav SW6100F fusion static welfare unit benefits from well equipped seating area for up to 8 people, separate drying area and comfortable and well ventilated toilet and drying room.



Dimensions	6100 mm (L) x 2755 mm (W) x 2800 mm (H)
Gross Weight	4500kg
Generator	6KVA
Fuel Tank	250 Litres

SEATING FOR UP TO



8 PEOPLE



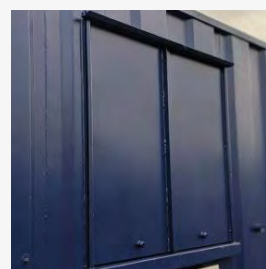
## Offering secure, best in class working conditions



**All steel construction**  
One of the most secure welfare units on the market with steel construction



**Highly secure double lock door**  
Steel personnel doors with built in locking mechanism and hidden hinges.



**High security window shutters**  
Steel shutters protect the windows, which are locked internally and can only be opened from inside the rest room.

For more information on our products and services, call us on **01375 398 398**, email [toilets@davlav.com](mailto:toilets@davlav.com) or visit [davlav.com](http://davlav.com)

# Offering a pleasant & comfortable welfare environment

Comfortably able to accommodate up to 8 people, our SW6100F Fusion welfare units offer the following features as standard:



## Microwave and Kettle

Home comforts with a kettle and microwave. Please note appliances can only be operated when the generator is running.



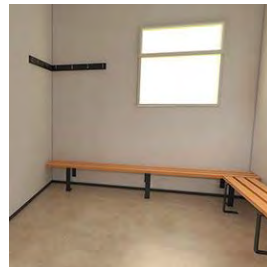
## Sink

A large stainless sink, ideal for washing cutlery, plates and cups.



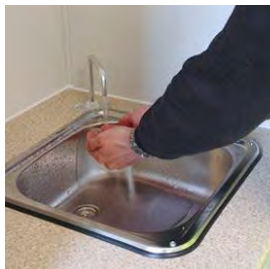
## Enhanced interior

Easy to clean with water and detergent seat bases. Made from from WISA®-Multiwall, a high quality plastic coated wall lining panelling/



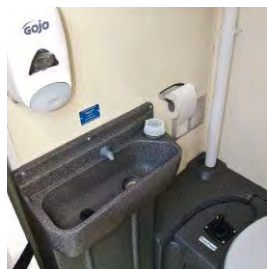
## Drying Area

Provision for drying and changing clothes.



## Hot Water

The water outlet delivers warm water instantaneously and is delivered via a 12V pump.



## Toilet wash area

The onboard heating system delivers warm water to the forearm wash basin in the toilet area.



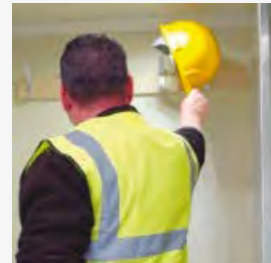
## Comfortably seats 8 people

The units are suitable for accommodating 8 people, which provides pleasant and safe working environments, ideal for rental companies and contractors.

## HSE & CDM compliant welfare

We deliver units that are HSE & CDM compliant and have washing facilities, access to drinking water, sanitary conveniences, drying and changing facilities and of course an area for resting and eating.

All our welfare units are supplied with a current and relevant electrical installation test certificate.



- ✓ **Regulation Regulation 20** Sanitary Conveniences
- ✓ **Regulation Regulation 21** Washing Facilities
- ✓ **Regulation Regulation 22** Provision for Drinking Water

- ✓ **Regulation Regulation 23** Provision for Drying Clothing
- ✓ **Regulation Regulation 24** Facilities for Changing Clothing
- ✓ **Regulation Regulation 25** Facilities for Rest & to Eat Meals

# Key features of the Davlav SW6100F Fusion static welfare unit

Here is a detailed list of everything you need to know about the Davlav SW6100F Fusion static welfare unit.



## External Construction

- Steel profiled panels to side walls and roof
- Aluminium sliding Window with steel shutter
- Steel personnel doors to three separate areas (Toilet, Warm Room/Generator and Canteen)
- Fixed low level lifting & fork pockets

## Welfare Area

- Pleasant and light rest area
- Table and bench seating for up to 8 people
- Warm water supplied by on-board heating system
- Large stainless steel sink c/w warm water tap
- Microwave and kettle – both hard-wired
- Fresh & waste water containers (20 Ltr cap each)
- 1 x 230V double socket
- Consumer board c/w RCD & MCB's
- Hour run meter on generator
- Paper towel dispenser
- Liquid soap dispenser
- Carbon monoxide monitor and smoke alarm
- High level vents
- 1000mm base unit c/w 10L water heating system
- LED lighting
- 6x4 felt noticed board
- Heating supplied by air blown Webasto heating system

## Internal Construction

- Lined and Insulated in GRP, panels with block insulation inserts

## Toilet Area

- Plastic recirculating toilet c/w ventilation pipe
- Forearm pedestal wash basin c/w warm water tap
- Toilet tank size: 280L
- Warm water supplied by on-board heating system
- Toilet roll holder
- LED lighting
- Liquid soap & paper towel dispenser

## Warm Room / Generator Area

- 6kVA super silent diesel generator with exhaust outlet and ventilation
- 230v bulkhead light
- 250 litre diesel tank with filler neck and level gauge
- 3mm thick O/P (over-plain) diamond durbar plate flooring
- Generator hour run meter
- Generator start battery
- Fuel tank runtime = approx. 120 hours

## Drying Area

- Heating supplied by air blown Webasto heating system
- High level window
- Coat hooks
- LED lighting
- Generator service hatch
- Bench seating



# SW07600 FUSION STATIC WELFARE UNIT (6 KVA GENERATOR)

## STATIC WELFARE UNIT

- Anti vandal
- 6 KVA generator
- Spacious and well equipped

The Davlav SW07600 Fusion static welfare unit benefits from a well equipped seating area for up to 8 people, separate office area and comfortable and well ventilated toilet and drying room. This unit can accommodate 10 - 12 people when used to its full potential.



Dimensions	7620 (L) x 2755 (W) (mm)
Gross Weight	4600 kg
Generator	6kVA
Fuel Tank	300 Litre

SEATING FOR UP TO



8 PEOPLE



## Offering secure, best in class working conditions



**All steel construction**  
One of the most secure welfare units on the market with steel construction



**Highly secure double lock door**  
Steel personnel doors with built in locking mechanism and hidden hinges.



**High security window shutters**  
Steel shutters protect the windows, which are locked internally and can only be opened from inside the rest room.

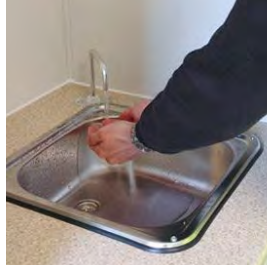
# Delivering comfort as standard

Comfortably able to accommodate up to 10 people (8 in the canteen + 2 in the office feature), our GPO500 Fusion units offer the following features as standard:



### Microwave and Kettle

Home comforts with a kettle and microwave. Please note appliances can only be operated when the generator is running.



### Stainless sink

A large stainless sink, perfect for washing all your plates and cups.



### Enhanced interior

Easy to clean with water and detergent seat bases. Made from from WISA®-Multiwall, a high quality plastic coated wall lining panelling.



### Office area

A spacious office offers greater flexibility on-site.



### Delivery of hot water

Warm water is delivered instantaneously via a 12V pump.



### Toilet wash area

The onboard heating system delivers warm water to the forearm wash basin in the toilet area.



### Comfortably seats 8 people

The units provide pleasant and safe working environments for up to 8 people.

## HSE & CDM compliant welfare

We deliver units that are HSE & CDM compliant and have washing facilities, access to drinking water, sanitary conveniences, drying and changing facilities and of course an area for resting and eating.

All our welfare units are supplied with a current and relevant electrical installation test certificate.



- ✓ **Regulation Regulation 20** Sanitary Conveniences
- ✓ **Regulation Regulation 21** Washing Facilities
- ✓ **Regulation Regulation 22** Provision for Drinking Water

- ✓ **Regulation Regulation 23** Provision for Drying Clothing
- ✓ **Regulation Regulation 24** Facilities for Changing Clothing
- ✓ **Regulation Regulation 25** Facilities for Rest & to Eat Meals

# Key features of our SWO7600 Fusion Static Welfare Unit (6 KVA Generator) in detail

Here is a detailed list of everything you need to know about the Davlav SWO7600 Fusion.



## External Construction

- Steel profiled panels to side walls and roof
- Aluminium sliding Window with steel shutter
- Steel personnel doors to four separate areas (Toilet, Warm Room/Generator, Canteen and Office)
- Removable low level lifting eyes
- Fixed low level lifting & fork pockets

## Welfare Area

- Pleasant and light rest area
- Table and bench seating for up to 8 people
- Warm water supplied by on-board heating system
- Large stainless steel sink c/w warm water tap
- Microwave and kettle – both hard-wired
- Fresh & waste water containers (20 Ltr cap each)
- 1 x 230V double socket & 1 x 230V single socket
- Consumer board c/w RCD & MCB's
- Generator control panel with hour run meter
- Paper towels, liquid soap and cup dispenser
- Carbon monoxide monitor and smoke alarm
- High level vents
- 1000mm base unit c/w 10L water heating system
- LED lighting
- 6x4 felt noticed board
- Heating supplied by air blown Webasto heating system

## Office Area

- Sliding window with steel shutters, which when closed are secured internally
- Notice and wipe clean board
- Office table and chair (optional)
- LED lighting
- 230V double socket
- Heating supplied by air blown Webasto heating system

## Internal Construction

- Lined and Insulated in GRP, panels with block insulation inserts

## Drying Area

- Heating supplied by air blown Webasto heating system
- High level window
- Coat hooks
- LED lighting
- Generator service hatch
- Bench seating

## Toilet Area

- Plastic 280L recirculating toilet c/w ventilation pipe
- Forearm pedestal wash basin c/w warm water tap
- Warm water supplied by on-board heating system
- Toilet roll holder
- LED lighting
- Liquid soap & paper towel dispenser

## Warm Room / Generator Area

- 6KVA super silent diesel generator with exhaust outlet and ventilation
- LED lighting
- 300 litre diesel tank with filler neck and level gauge
- 3mm thick O/P (over-plain) diamond durbar plate flooring
- Generator hour run meter
- 12V generator start battery
- Fuel tank runtime = approx. 120 hours

# SWO7600 FUSION STATIC WELFARE UNIT (9.8 KVA GENERATOR)

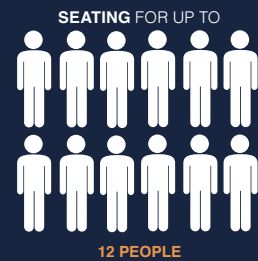
## STATIC WELFARE UNIT

- Anti vandal
- 9.8 KVA generator to power tools
- Spacious and well equipped



The Davlav SWO7600F (9.8KVA) static fusion starter unit is ideal for sites with no mains or power connection. The unit benefits from a well equipped seating area for up to 8 people, separate office area and comfortable and well ventilated toilet and drying room. This unit can accommodate 10 - 12 people when used to its full potential. This unit comes with scope to power tools via an external 32amp socket.

Dimensions	7620 (L) x 2755 (W) (mm)
Gross Weight	5200kg
Generator	9.8KVA
Fuel Tank	300 Litre



## Offering secure, best in class working conditions



**All steel construction**  
One of the most secure welfare units on the market with steel construction



**Highly secure double lock door**  
Steel personnel doors with built in locking mechanism and hidden hinges.



**High security window shutters**  
Steel shutters protect the windows, which are locked internally and can only be opened from inside the rest room.

# Offering a pleasant & comfortable welfare environment

Comfortably able to accommodate 10 - 12 people, our SWO7600 Fusion units offer the following features as standard:



**9.8KVA diesel generator**  
Diesel generator to power the unit.



**Microwave and Kettle**  
Home comforts with a kettle and microwave. Please note appliances can only be operated when the generator is running.



**Stainless sink**  
A large stainless sink, perfect for washing all your plates and cups.



**Enhanced interior**  
Easy to clean with water and detergent seat bases. Made from from WISA®-Multiwall, a high quality plastic coated wall lining panelling.



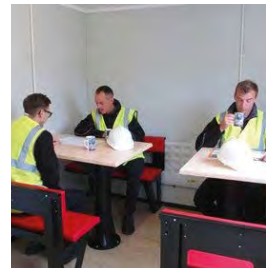
**Office area**  
A spacious office offers greater flexibility on-site.



**Delivery of hot water**  
Warm water is delivered instantaneously via a 12V pump.



**Toilet wash area**  
The onboard heating system delivers warm water to the forearm wash basin in the toilet area.

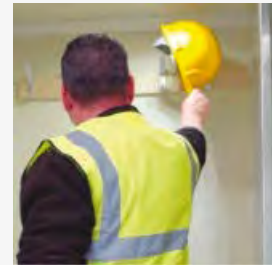


**Comfortably seats 12 people**  
The units provide pleasant and safe working environments for up to 12 people.

## HSE & CDM compliant welfare

We deliver units that are HSE & CDM compliant and have washing facilities, access to drinking water, sanitary conveniences, drying and changing facilities and of course an area for resting and eating.

All our welfare units are supplied with a current and relevant electrical installation test certificate.



- ✓ **Regulation Regulation 20** Sanitary Conveniences
- ✓ **Regulation Regulation 21** Washing Facilities
- ✓ **Regulation Regulation 22** Provision for Drinking Water

- ✓ **Regulation Regulation 23** Provision for Drying Clothing
- ✓ **Regulation Regulation 24** Facilities for Changing Clothing
- ✓ **Regulation Regulation 25** Facilities for Rest & to Eat Meals

# Key features of our SWO7600 Fusion Static Welfare Unit (6 KVA Generator) in detail

Here is a detailed list of everything you need to know about the Davlav SWO7600 Fusion.



## External Construction

- Steel profiled panels to side walls and roof
- Aluminium sliding Window with steel shutter
- Steel personnel doors to four separate areas (Toilet, Warm Room/Generator, Canteen and Office)
- Removable low level lifting eyes
- Fixed low level lifting & fork pockets

## Welfare Area

- Pleasant and light rest area
- Table and bench seating for up to 12 people
- Warm water supplied by on-board heating system
- Large stainless steel sink c/w warm water tap
- Microwave and kettle – both hard-wired
- Fresh & waste water containers (20 Ltr cap each)
- 1 x 230V double socket & 1 x 230V single socket
- Consumer board c/w RCD & MCB's
- Generator control panel with hour run meter
- Paper towels, liquid soap and cup dispenser
- Carbon monoxide monitor and smoke alarm
- High level vents
- 1000mm base unit c/w 10L water heating system
- LED lighting
- 6x4 felt noticed board
- Heating supplied by air blown Webasto heating system

## Office Area

- Sliding window with steel shutters, which when closed are secured internally
- Notice and wipe clean board
- Office table and chair (optional)
- LED lighting
- 230V double socket
- Heating supplied by air blown Webasto heating system

## Internal Construction

- Lined and Insulated in GRP, panels with block insulation inserts

## Drying Area

- Heating supplied by air blown Webasto heating system
- High level window
- Coat hooks
- LED lighting
- Generator service hatch
- Bench seating

## Toilet Area

- Plastic 280L recirculating toilet c/w ventilation pipe
- Forearm pedestal wash basin c/w warm water tap
- Warm water supplied by on-board heating system
- Toilet roll holder
- LED lighting
- Liquid soap & paper towel dispenser

## Warm Room / Generator Area

- 9.8KVA super silent diesel generator with exhaust outlet and ventilation
- LED lighting
- 300 litre diesel tank with filler neck and level gauge
- 3mm thick O/P (over-plain) diamond durbar plate flooring
- Generator hour run meter
- 12V generator start battery
- Fuel tank runtime = approx. 120 hours

# SWO7600 STANDARD STATIC UNIT (6KVA)

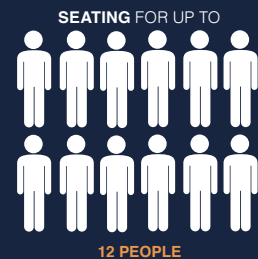
## STATIC WELFARE UNIT

- Spacious and well equipped
- Seperate office space
- 6kVA generator
- Suitable for long term projects as cost effective



The Davlav SWO7600 static welfare unit benefits from a well equipped seating area for up to 8 people, separate office area and comfortable and well ventilated toilet and drying room.

Dimensions	7620mm (L) x 2755mm (W) x 2800mm (H)
Unladen Weight	4400 kg
Gross Weight	4700 kg
Generator	6KVA



## Offering secure, best in class working conditions



**All steel construction**  
One of the most secure welfare units on the market with steel construction



**Highly secure double lock door**  
Steel personnel doors with built in locking mechanism and hidden hinges.



**High security window shutters**  
Steel shutters protect the windows, which are locked internally and can only be opened from inside the rest room.

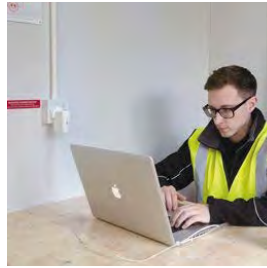
# Offering a pleasant & comfortable welfare environment

Comfortably able to accommodate 10 - 12 people, our SWO7600 Fusion units offer the following features as standard:



## Office area

A spacious office offers greater flexibility on-site.



## Inverted power socket

Suitable for powering laptops, phone chargers and small printers.



## Enhanced interior

Easy to clean with water and detergent seat bases. Made from from WISA®-Multiwall, a high quality plastic coated wall lining panelling.



## Microwave and Kettle

Home comforts with a kettle and microwave. Please note appliances can only be operated when the generator is running.



## LED lights with PIR sensors

12V LED PIR lighting automatically senses movement turning lights on or off as required. Situated in the canteen, toilet and generator room.



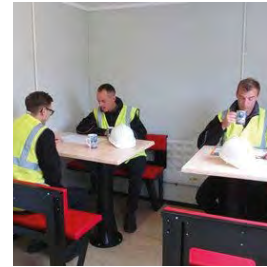
## Hot water

The water outlet delivers warm water instantaneously and is delivered via a 12V pump.



## Toilet wash area

The onboard heating system delivers warm water to the forearm wash basin in the toilet area.



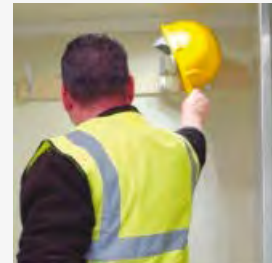
## Comfortably seats 12 people

The units are suitable for accommodating 12 people, which provides pleasant and safe working environments, ideal for rental companies and contractors.

## HSE & CDM compliant welfare

We deliver units that are HSE & CDM compliant and have washing facilities, access to drinking water, sanitary conveniences, drying and changing facilities and of course an area for resting and eating.

All our welfare units are supplied with a current and relevant electrical installation test certificate.



- ✓ **Regulation Regulation 20** Sanitary Conveniences
- ✓ **Regulation Regulation 21** Washing Facilities
- ✓ **Regulation Regulation 22** Provision for Drinking Water

- ✓ **Regulation Regulation 23** Provision for Drying Clothing
- ✓ **Regulation Regulation 24** Facilities for Changing Clothing
- ✓ **Regulation Regulation 25** Facilities for Rest & to Eat Meals



# Key features of the Davlav SWO7600 static welfare unit

Here is a detailed list of everything you need to know about the Davlav SWO7600 static welfare unit.



## External Construction

- Steel profiled panels to side walls and roof
- Aluminium sliding Window with steel shutter
- Steel personnel doors to four separate areas (Toilet, Warm Room/Generator, Canteen and Office)
- Removable low level lifting eyes
- Fixed low level lifting & fork pockets

## Welfare Area

- Pleasant and light rest area
- Table and bench seating for up to 12 people
- Warm water supplied by on-board heating system
- Large stainless steel sink c/w warm water tap
- Microwave and kettle – both hard-wired
- Fresh & waste water containers (20 Ltr cap each)
- 1 x 230V double socket & 1 x 230V single socket
- Consumer board c/w RCD & MCB's
- Generator control panel with hour run meter
- Paper towels, liquid soap and cup dispenser
- Carbon monoxide monitor and smoke alarm
- High level vents
- 1000mm base unit c/w 10L water heating system
- LED lighting
- 6x4 felt noticed board
- Heating supplied by air blown Webasto heating system

## Office Area

- Sliding window with steel shutters, which when closed are secured internally
- Notice and wipe clean board
- Office table and chair (optional)
- LED lighting
- 230V double socket
- Heating supplied by air blown Webasto heating system

## Internal Construction

- Lined and Insulated in GRP, panels with block insulation inserts

## Drying Area

- Heating supplied by air blown Webasto heating system
- 12V LED lighting with PIR
- Coat hooks
- Bench seating
- High level window

## Toilet Area

- Plastic recirculating toilet c/w ventilation pipe
- Forearm pedestal wash basin c/w warm water tap
- Toilet tank size: 280L
- Warm water supplied by on-board heating system
- Toilet roll holder
- 12V LED lighting with PIR
- Ventilation panel
- Liquid soap and paper towel dispenser

## Warm Room / Generator Area

- 6kVA super silent diesel generator
- 12V LED lighting with PIR
- 200 litre diesel tank with filler neck and level gauge with Fuel Active system
- Fuel tank runtime = approx. 105 hours
- 130Amp hour battery
- Generator start battery
- 12V 30Amp battery charger
- Battery guard with fuse panel

# SINGLE CHEMICAL COLD WATER HAND WASH TOILET

## PORTABLE TOILET

- Low maintenance
- Well ventilated interior
- Cold water supply

Our Single Chemical Portable Toilet comes with the added benefit of cold water hand wash and is an ideal solution for adequate sanitation facilities for any sized project and those particularly where power supply is unavailable. Davlav chemical units are spacious, well ventilated and come with a chemical waste disposal unit.



Dimensions	<b>H2328 x W1118 x D1219 mm</b>
Weight	<b>75kg</b>
Standard Tank Volume	<b>265L</b>
Door Opening	<b>1854 x 610 mm</b>



## Spacious, well ventilated and hot water flush

Suitable for all sizes of projects, the single chemical toilet c/w with hot water hand wash features:

### Features

- Large 265L sumped tank
- Molded-in vent screens
- Convenient door hook



Sink



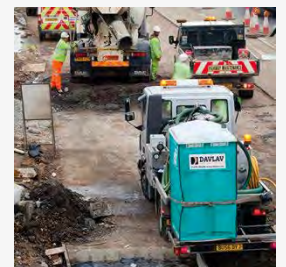
Sitting style tank with hand/foot flush



Weekly service included



Delivered curbside



Self contained unit

For more information on our products and services, call us on **01375 398 398**, email [sales@davlav.com](mailto:sales@davlav.com) or visit [davlav.com](http://davlav.com)

# SINGLE CHEMICAL 110V HOT WATER HAND WASH TOILET

## PORTABLE TOILET

- Low maintenance
- Well ventilated interior
- Warm water supply
- Low voltage

Our single chemical portable toilet comes with the added benefit of low voltage warm water hand wash and is an ideal solution for adequate sanitation facilities for any sized project. Davlav chemical units are spacious, well ventilated and come with a chemical waste disposal unit. Mains connected chemical units will require power.



Dimensions	<b>H2328 x W1118 x D1219 mm</b>
Weight	<b>75kg</b>
Standard Tank Volume	<b>265L</b>
Door Opening	<b>1854 x 610 mm</b>
Power Supply	<b>110v</b>



## Spacious, well ventilated and warm water flush

Suitable for all sizes of projects, the single chemical toilet c/w with warm water hand wash features:

### Features

- Large 265L sumped tank
- Molded-in vent screens
- Weekly service included
- Power supply required 110v



Sink



Sitting style tank with hand/foot flush



Weekly service included



Delivered curb side



Self contained unit

For more information on our products and services, call us on **01375 398 398**, email [sales@davlav.com](mailto:sales@davlav.com) or visit [davlav.com](http://davlav.com)

# SINGLE CHEMICAL 240V HOT WATER HAND WASH TOILET

## PORTABLE TOILET

- Low maintenance
- Well ventilated interior
- Hot water supply
- Power supply required

Our single chemical portable toilet comes with the added benefit of 240v hot water hand wash and is an ideal solution for adequate sanitation facilities for any sized project. Davlav chemical units are spacious, well ventilated and come with a chemical waste disposal unit. Mains connected chemical units will require power.



Dimensions	<b>H2328 x W1118 x D1219 mm</b>
Weight	<b>75kg</b>
Standard tank volume	<b>265L</b>
Door Opening	<b>1854 x 610 mm</b>
Power Supply	<b>Standard 240v 16amp</b>



## Spacious, well ventilated and hot water flush

Suitable for all sizes of projects, the single chemical toilet c/w with hot water hand wash features:

### Features

- Large 265L sumped tank
- Molded-in vent screens
- Convenient door hook



Sink



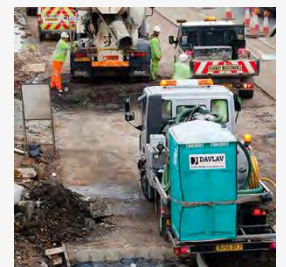
Sitting style tank with hand/foot flush



Weekly service included



Delivered curb side



Self contained unit

For more information on our products and services, call us on **01375 398 398**, email [sales@davlav.com](mailto:sales@davlav.com) or visit [davlav.com](http://davlav.com)

# SINGLE MAINS CONNECTED TOILET

## PORTABLE TOILET

- Low maintenance
- Well ventilated interior
- Mains and waste connected

Our Single Mains Connected Toilet units benefit from a recirculating flush system, hand wash and can be mains connected when power supply is available.



Dimensions	<b>H2328 x W1118 x D1219 mm</b>
Weight	<b>75 kg</b>
Door Opening	<b>1854 x 610 mm</b>
Power Supply	<b>Standard 240v 16amp</b>



## Spacious, well ventilated and hot water flush

Suitable for all sizes of projects, the single chemical toilet c/w with hot water hand wash features:

### Features

- Mains water connection required
- Power supply required
- 240V 16amp supply required
- Waste connection required
- Fresh flush units



Weekly service included



Requires hose for water supply



Mains and waste connected

For more information on our products and services, call us on **01375 398 398**, email [sales@davlav.com](mailto:sales@davlav.com) or visit [davlav.com](http://davlav.com)

# WHEELCHAIR ACCESSIBLE PORTABLE TOILET WITH HAND WASH

## PORTABLE TOILET

- Low maintenance
- Well ventilated interior
- Wheelchair accessible
- Flat floor system for easy access and use

Our spacious and well ventilated wheelchair accessible portable toilets come with a patented flat floor system, making usability easy and comfortable. All sanitary ware and handles are fitted at accessible heights for comfort and ease of use



Dimensions	<b>H2220 x W1575 x D1575 mm</b>
Weight	<b>113kg</b>
Standard tank volume	<b>132L</b>
Door width	<b>830mm</b>
Seat Height	<b>483mm</b>
Door Height	<b>2050mm</b>



## Spacious, well ventilated wheelchair accessible portable toilet

Suitable for all sizes of projects, the Davlav wheelchair accessible toilet with hand wash features:

### Features

- Large 132L straight drop tank
- Flat floor system for easy wheelchair manoueverability
- Wheelchair height adjusted seat and sanitary ware and fixtures and fittings
- Fresh flush units
- Weekly service included



# SINGLE MAINS STEEL TOILET

## PORTABLE TOILET

- Low maintenance
- Well ventilated interior
- Mains and waste connected

Our Single Mains Steel toilets are robust, quick to assemble and are suitable for temporary and permanent use. Mains connected and fresh running water as standard.



Dimensions

L 200 X W1400 X H2540

Weight

350kg



## Spacious, well ventilated and mains connected

Suitable for all sizes of projects, the single mains containex portable toilet features:

### Features

- Solid steel construction
- Fresh flush units
- Weekly service included



For more information on our products and services, call us on **01375 398 398**, email [sales@davlav.com](mailto:sales@davlav.com) or visit [davlav.com](http://davlav.com)

# DOUBLE MAINS STEEL TOILET

## PORTABLE TOILET

- Low maintenance
- Well ventilated interior
- Mains and waste connected
- Two toilet cubicles

Our Double Mains Steel toilets are robust, quick to assemble and are suitable for temporary and permanent use. Mains connected and fresh running water as standard.



Dimensions

L 2400 x W 1400 x H 2540

Weight

570 kg



## Spacious, well ventilated and mains connected

Suitable for all sizes of projects, the single mains containex portable toilet features:

### Features

- Solid steel construction
- Fresh flush units
- Weekly service included
- 2 x self contained WC units



For more information on our products and services, call us on **01375 398 398**, email [sales@davlav.com](mailto:sales@davlav.com) or visit [davlav.com](http://davlav.com)



# TANKER SERVICES

## WASTE MANAGEMENT

- Regular contract servicing
- Emergency response capability
- One off waste collection

We offer responsive and cost effective emptying services for your septic tanks, wastewater tanks and cesspits. Whether you require an hoc or a regular emptying schedule, at your home, business or onsite (even if you didn't hire your facilities from us) we are on hand to help.



### Flexible waste management solutions to meet all requirements

We have both the experience, expertise and equipment to offer an industry leading tank emptying and refill service. With over 25 years of managing waste removal from septic tanks, wastewater tanks and cesspits, our highly experienced drivers will ensure the job is done with minimal disruption.

Our large fleet of tankers, in a range of different sizes, can not only empty the waste, we can also clean and sanitise your toilets, welfare vans and welfare units at the same time. We can provide a reliable and cost-effective one stop solution to all your waste management requirements.

If you require non potable water then our 3000 gallon tankers can deliver at a great price.



### Delivering quality as standard

Our tank emptying and non potable water refill services offer the following benefits as standard:



**Experienced staff**  
Our experienced and friendly drivers take pride in completing the job safely.



**Regular contracts**  
We can deliver a regular schedule of emptying to suit your requirements however frequent.



**Adhoc services**  
From emergency empties or a one off tank empty we can fulfil.



**FORS members**  
We are members of the The Fleet Operator Recognition Scheme (FORS).



**Fleet of tankers**  
Our large fleet of tankers ensure we can service the biggest of tank empties.



**Environmental**  
We're fully licensed by the Environment Agency.



**Non potable water**  
We provide non potable water refill services.



**Waste Transfer Note (WTN)**  
We empty your waste at an authorised sewage farm and provide you with a WTN for your records.

# ECO 20' X 9' A/V CANTEEN

## CANTEEN

- Secure anti vandal
- Easy to look after
- Jack legs to enable level installation

Our well equipped canteen units provide spacious and comfortable rest area for your staff, with thermostatic heating, well equipped kitchenette area including sink and workspace and robust furniture to seat up to 12 people. Our canteens and cabins are robust and vandal resistant and can be stacked if necessary, to make use of space and are cost effective to run.



Dimensions	<b>6100 (L) x 2750 (W) (mm)</b>
Gross Weight	<b>1850 kg</b>
Power Connection	<b>230 V 32 AMP commando plug</b>
Water Connection	<b>15mm push fit poly pipe</b>
Grey Waste Connection	<b>40mm waste pipe</b>

SEATING FOR UP TO



**12 PEOPLE**



### Stainless Steel Sink

A large stainless sink, perfect for washing all your plates and cups.



### PIR Sensors

Energy efficient PIR sensors only turn the lights on when the unit is in use, automatically switching off when no motion is detected.



### UPVC Windows

These double glazed tilt and turn windows come with an energy performance of 1.6 W/m²K.



### Door Closers

Door closers fitted to all external doors.

# Offering a pleasant & comfortable welfare environment

Our anti vandal accommodation range supplies a clean and safe environment for your staff to take their breaks. Our modern fleet is easy to use and will give your company the professional image it deserves.

## Canteen Area

- Stainless steel sink, with double base unit and worktop
- 2 double sockets outlets, one above the worktop, one below
- 2 Additional double sockets at low level
- 1-2 No 2kW wall mounted convector heater
- PIR sensors
- 5L water heater

## Flooring

- 1.5mm vinyl polyfloor 1.5XL

## Internal Construction

- Mono ceiling board
- 3.6mm EGB10 wallboard

## External Construction

- 1.6mm corrugated fully welded side pannels
- 1.6mm flat steel fully welded roof, & steel sub floor
- UPVC tilt and turn double glazed windows
- Secure anti vandal door and shutter
- Steel underdrawn and fully insulated floor, walls, & ceiling



# Offering secure, best in class working conditions



## All Steel Construction

1.6mm corrugated fully welded side pannels, 1.6mm flat steel fully welded roof & steel sub floor. UPVC tilt and turn double glazed windows. Secure anti vandal door and shutter.



## Jack Legs

The inclusion of jack legs allows the unit to be leveled quickly and simply on the most uneven of ground.



## High Security Door

With a 10 point locking system, 5 pin anti-drill Euro profile cylinder, stainless steel lever handles, anti-jemmy studs, stainless steel "anti-knockout" hinges, stainless steel threshold, weatherproof locking bolt grommet, and rubber seal system.



## Window Shutters

Leaf style steel shutters lockable internally, feature, heavy duty flush mounted alloy finger bolts with galvanised steel locking bolts, stainless steel "anti-knockout" hinges, hand grips, anti-jemmy studs, and drainage caps.

For more information on our products and services, call us on **01375 398 398**, email [sales@davlav.com](mailto:sales@davlav.com) or visit [davlav.com](http://davlav.com)

**DAVLAV**

# ECO 24' X 9' A/V CANTEEN

## CANTEEN

- Secure anti vandal
- Easy to look after
- Jack legs to enable level installation

Our well equipped canteen units provide spacious and comfortable rest area for your staff, with thermostatic heating, well equipped kitchenette area including sink and workspace and robust furniture to seat up to 16 people. Our canteens and cabins are robust and vandal resistant and can be stacked if necessary, to make use of space and are cost effective to run.



Dimensions	<b>7315 (L) x 2750 (W) (mm)</b>
Gross Weight	<b>2750 kg</b>
Power Connection	<b>230 V 32 AMP commando plug</b>
Water Connection	<b>15mm push fit poly pipe</b>
Grey Waste Connection	<b>40mm waste pipe</b>

SEATING FOR UP TO



16 PEOPLE



### Stainless Steel Sink

A large stainless sink, perfect for washing all your plates and cups.



### PIR Sensors

Energy efficient PIR sensors only turn the lights on when the unit is in use, automatically switching off when no motion is detected.



### UPVC Windows

These double glazed tilt and turn windows come with an energy performance of 1.6 W/m²K.



### Door Closers

Door closers fitted to all external doors.

# Offering a pleasant & comfortable welfare environment

Our anti vandal accommodation range supplies a clean and safe environment for your staff to take their breaks. Our modern fleet is easy to use and will give your company the professional image it deserves.

## Canteen Area

- Stainless steel sink, with double base unit and worktop
- Double sockets outlets, one above the worktop, one below
- 2 Additional double sockets at low level
- 1-2 No 2kW wall mounted convector heater
- PIR sensors
- 5L water heater

## Flooring

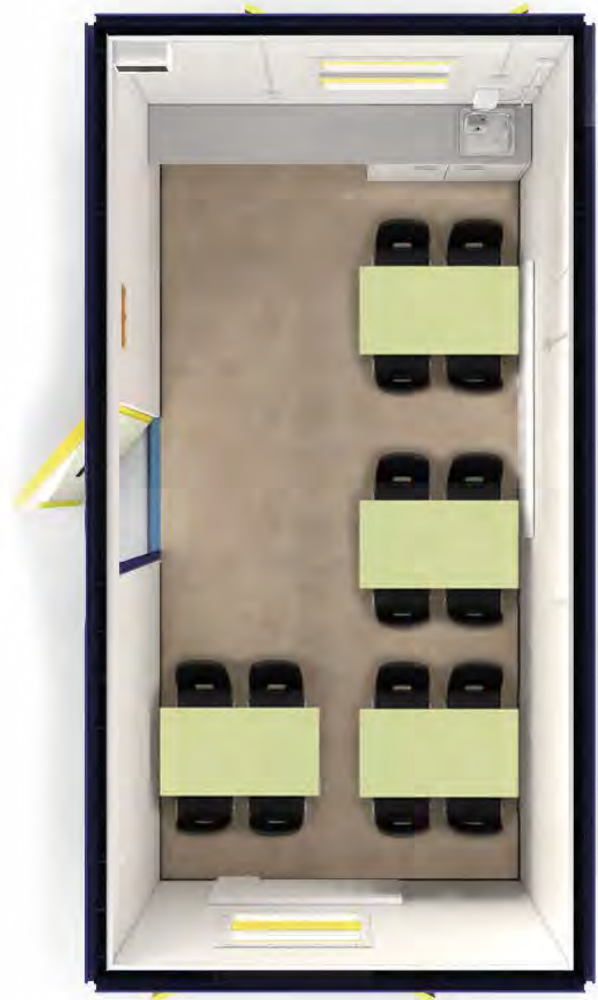
- 1.5mm vinyl polyfloor 1.5XL

## Internal Construction

- Mono ceiling board
- 3.6mm EGB10 wallboard

## External Construction

- 1.6mm corrugated fully welded side panels
- 1.6mm flat steel fully welded roof, & steel sub floor
- UPVC tilt and turn double glazed windows
- Secure anti vandal door and shutter
- Steel underdrawn and fully insulated floor, walls, & ceiling



# Offering secure, best in class working conditions



## All Steel Construction

1.6mm corrugated fully welded side panels, 1.6mm flat steel fully welded roof & steel sub floor. UPVC tilt and turn double glazed windows. Secure anti vandal door and shutter.



## Jack Legs

The inclusion of jack legs allows the unit to be leveled quickly and simply on the most uneven of ground.



## High Security Door

With a 10 point locking system, 5 pin anti-drill Euro profile cylinder, stainless steel lever handles, anti-jimmy studs, stainless steel "anti-knockout" hinges, stainless steel threshold, weatherproof locking bolt grommet, and rubber seal system.



## Window Shutters

Leaf style steel shutters lockable internally, feature, heavy duty flush mounted alloy finger bolts with galvanised steel locking bolts, stainless steel "anti-knockout" hinges, hand grips, anti-jimmy studs, and drainage caps.

For more information on our products and services, call us on **01375 398 398**, email [sales@davlav.com](mailto:sales@davlav.com) or visit [davlav.com](http://davlav.com)



# ECO 30' X 9' A/V CANTEEN

## CANTEEN

- Secure anti vandal
- Easy to look after
- Jack legs to enable level installation

Our well equipped canteen units provide spacious and comfortable rest area for your staff, with thermostatic heating, well equipped kitchenette area including sink and workspace and robust furniture to seat up to 24 people. Our canteens and cabins are robust and vandal resistant and can be stacked if necessary, to make use of space and are cost effective to run.



Dimensions	<b>9150 (L) x 2750 (W) (mm)</b>
Gross Weight	<b>3750 kg</b>
Power Connection	<b>230 V 32 AMP commando plug</b>
Water Connection	<b>15mm push fit poly pipe</b>
Grey Waste Connection	<b>40mm waste pipe</b>



**Stainless Steel Sink**  
A large stainless sink, perfect for washing all your plates and cups.



**PIR Sensors**  
Energy efficient PIR sensors only turn the lights on when the unit is in use, automatically switching off when no motion is detected.



**UPVC Windows**  
These double glazed tilt and turn windows come with an energy performance of 1.6 W/m²K.



**Door Closers**  
Door closers fitted to all external doors.

# Offering a pleasant & comfortable welfare environment

Our anti vandal accommodation range supplies a clean and safe environment for your staff to take their breaks. Our modern fleet is easy to use and will give your company the professional image it deserves.

## Canteen Area

- Stainless steel sink, with double base unit and worktop
- Double sockets outlets, one above the worktop, one below
- 2 Additional double sockets at low level
- 1-2 No 2kW wall mounted convector heater
- PIR sensors
- 5L water heater

## Flooring

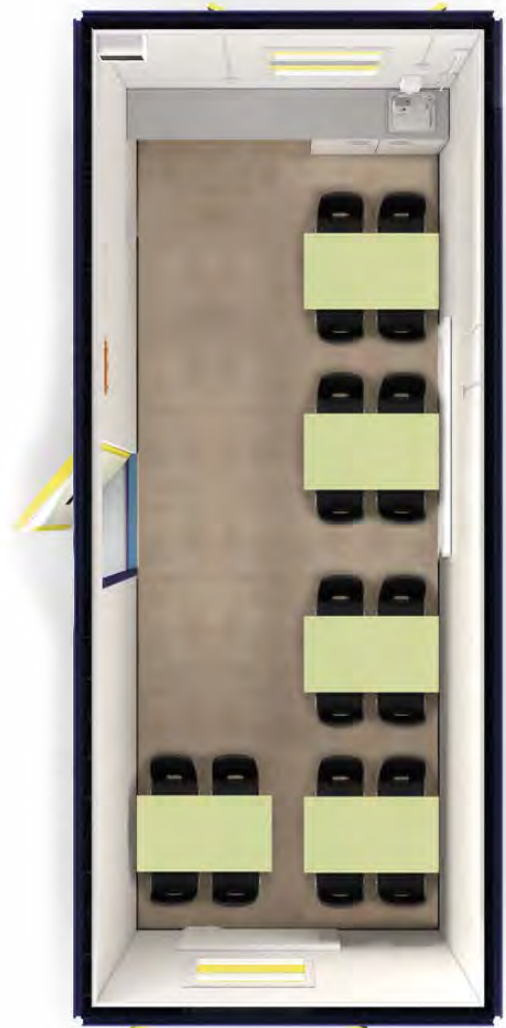
- 1.5mm vinyl polyfloor 1.5XL

## Internal Construction

- Mono ceiling board
- 3.6mm EGB10 wallboard

## External Construction

- 1.6mm corrugated fully welded side panels
- 1.6mm flat steel fully welded roof, & steel sub floor
- UPVC tilt and turn double glazed windows
- Secure anti vandal door and shutter
- Steel underdrawn and fully insulated floor, walls, & ceiling



# Offering secure, best in class working conditions



## All Steel Construction

1.6mm corrugated fully welded side panels, 1.6mm flat steel fully welded roof & steel sub floor. UPVC tilt and turn double glazed windows. Secure anti vandal door and shutter.



## Jack Legs

The inclusion of jack legs allows the unit to be leveled quickly and simply on the most uneven of ground.



## High Security Door

With a 10 point locking system, 5 pin anti-drill Euro profile cylinder, stainless steel lever handles, anti-jimmy studs, stainless steel "anti-knockout" hinges, stainless steel threshold, weatherproof locking bolt grommet, and rubber seal system.



## Window Shutters

Leaf style steel shutters lockable internally, feature, heavy duty flush mounted alloy finger bolts with galvanised steel locking bolts, stainless steel "anti-knockout" hinges, hand grips, anti-jimmy studs, and drainage caps.

For more information on our products and services, call us on **01375 398 398**, email [sales@davlav.com](mailto:sales@davlav.com) or visit [davlav.com](http://davlav.com)

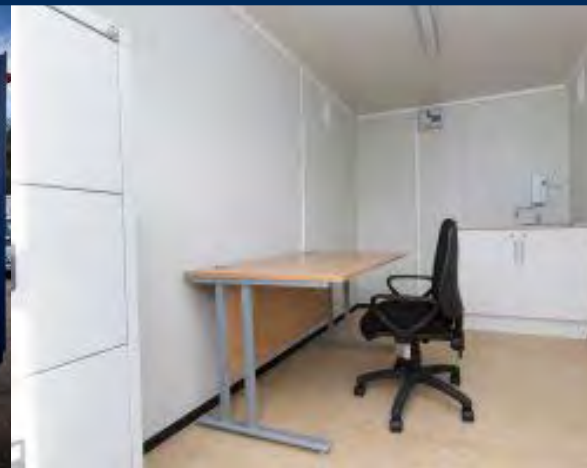
**DAVLAV**

# 12' X 8' MOBILE OFFICE UNIT

## MOBILE OFFICE UNIT

- Spacious well finished interiors
- Electrical sockets
- Anti-vandal protection system

Our 12' towable office units provide the perfect space for up to 2 site managers working in locations with limited space. The unit comes complete with a kitchenette, allowing you to make refreshments and wash up within the unit. If you are looking to rent out an office with its own furniture then we can supply desks and chairs at a small additional cost. This product can also be used as a canteen, please ask our sales and hire team for more information on this option.



Dimensions	<b>3600 (L) x 2700 (W) (mm)</b>
Gross Weight	<b>1500 kg</b>
Power Connection	<b>230 V 32 AMP commando plug</b>
Water Connection	<b>15mm push fit polypipe</b>
Grey Waste Connection	<b>40mm waste pipe</b>

SEATING FOR UP TO



2 PEOPLE





# Offering a pleasant & comfortable welfare environment

Our anti vandal accommodation range supplies a clean and safe environment for your staff to take their breaks. Our modern fleet is easy to use and will give your company the professional image it deserves.

## Office Area

- Spacious well finished interiors
- Electrical sockets
- Anti-vandal protection system
- Furniture options available

## Flooring

- 1.5mm vinyl polyfloor
- 1.5XL graphite 9120

## Internal Construction

- Mono ceiling board
- 3.6mm EGB10 wallboard

## External Construction

- 1.6mm corrugated fully welded side pannels
- 1.6mm flat steel fully welded roof, & steel sub floor
- UPVC tilt and turn double glazed windows
- Secure anti vandal door and shutter
- Steel underdrawn and fully insulated floor, walls, & ceiling



# Offering secure, best in class working conditions



## Stainless Steel Sink

A large stainless sink, perfect for washing all your plates and cups.



## Sockets

240v appliance inlet.



## High Security Door

Steel personnel doors with built in locking mechanism and hidden hinges.



## Window Shutters

Leaf style steel shutters lockable internally, feature, heavy duty flush mounted alloy finger bolts with galvanised steel locking bolts, stainless steel "anti-knockout" hinges, hand grips, anti-jemmy studs, and drainage caps.

For more information on our products and services, call us on **01375 398 398**, email [sales@davlav.com](mailto:sales@davlav.com) or visit [davlav.com](http://davlav.com)

**DAVLAV**

# ECO 20' X 9' A/V OFFICE

## OFFICE

- Secure anti vandal
- Easy to look after
- Jack legs to enable level installation

Our well equipped office units provide a spacious and comfortable working environment for your staff. With thermostatic heating and PIR lighting the unit can accommodate up to 4 people working at desks. Furniture is available upon request. Please ask our hire and sales team for more information.



Dimensions	<b>6100 (L) x 2750 (W) (mm)</b>
Gross Weight	<b>1850 kg</b>
Power Connection	<b>230 V 32 AMP commando plug</b>

SEATING FOR UP TO



4 PEOPLE



### PIR Sensors

Energy efficient PIR sensors only turn the lights on when the unit is in use, automatically switching off when no motion is detected.



### UPVC Windows

These double glazed tilt and turn windows come with an energy performance of 1.6 W/m<sup>2</sup>K.



### Door Closers

Door closers fitted to all external doors.

# Offering a pleasant & comfortable welfare environment

Our anti vandal accommodation range supplies a clean and safe environment for your staff to take their breaks. Our modern fleet is easy to use and will give your company the professional image it deserves.

## Office Area

- 2-4 double sockets at low level
- 1-2 No 2kW wall mounted convector heater
- PIR sensors

## Flooring

- 1.5mm vinyl polyfloor
- 1.5XL graphite 9120

## Internal Construction

- Mono ceiling board
- 3.6mm EGB10 wallboard

## External Construction

- 1.6mm corrugated fully welded side pannels
- 1.6mm flat steel fully welded roof, & steel sub floor
- UPVC tilt and turn double glazed windows
- Secure anti vandal door and shutter
- Steel underdrawn and fully insulated floor, walls, & ceiling



# Offering secure, best in class working conditions



## All Steel Construction

1.6mm corrugated fully welded side panels, 1.6mm flat steel fully welded roof & steel sub floor. UPVC tilt and turn double glazed windows. Secure anti vandal door and shutter.



## Jack Legs

The inclusion of jack legs allows the unit to be leveled quickly and simply on the most uneven of ground.



## High Security Door

With a 10 point locking system, 5 pin anti-drill Euro profile cylinder, stainless steel lever handles, anti-jimmy studs, stainless steel "anti-knockout" hinges, stainless steel threshold, weatherproof locking bolt grommet, and rubber seal system.



## Window Shutters

Leaf style steel shutters lockable internally, feature, heavy duty flush mounted alloy finger bolts with galvanised steel locking bolts, stainless steel "anti-knockout" hinges, hand grips, anti-jimmy studs, and drainage caps.

For more information on our products and services, call us on **01375 398 398**, email [sales@davlav.com](mailto:sales@davlav.com) or visit [davlav.com](http://davlav.com)

**DAVLAV**

# ECO 24' X 9' A/V OFFICE

## OFFICE

- Secure anti vandal
- Easy to look after
- Jack legs to enable level installation

Our well equipped office units provide a spacious and comfortable working environment for your staff. With thermostatic heating and PIR lighting the unit can accommodate up to 5 people working at desks. Furniture is available upon request. Please ask our hire and sales team for more information.



Dimensions	<b>7315 (L) x 2750 (W) (mm)</b>
Gross Weight	<b>2600 kg</b>
Power Connection	<b>230 V 32 AMP commando plug</b>



**PIR Sensors**  
Energy efficient PIR sensors only turn the lights on when the unit is in use, automatically switching off when no motion is detected.



**UPVC Windows**  
These double glazed tilt and turn windows come with an energy performance of 1.6 W/m²K.



**Door Closers**  
Door closers fitted to all external doors.

# Offering a pleasant & comfortable welfare environment

Our anti vandal accommodation range supplies a clean and safe environment for your staff to take their breaks. Our modern fleet is easy to use and will give your company the professional image it deserves.

## Office Area

- 2-4 double sockets at low level
- 1-2 No 2kW wall mounted convector heater
- PIR sensors

## Flooring

- 1.5mm vinyl polyfloor
- 1.5XL graphite 9120

## Internal Construction

- Mono ceiling board
- 3.6mm EGB10 wallboard

## External Construction

- 1.6mm corrugated fully welded side pannels
- 1.6mm flat steel fully welded roof, & steel sub floor
- UPVC tilt and turn double glazed windows
- Secure anti vandal door and shutter
- Steel underdrawn and fully insulated floor, walls, & ceiling



# Offering secure, best in class working conditions



## All Steel Construction

1.6mm corrugated fully welded side panels, 1.6mm flat steel fully welded roof & steel sub floor. UPVC tilt and turn double glazed windows. Secure anti vandal door and shutter.



## Jack Legs

The inclusion of jack legs allows the unit to be leveled quickly and simply on the most uneven of ground.



## High Security Door

With a 10 point locking system, 5 pin anti-drill Euro profile cylinder, stainless steel lever handles, anti-jimmy studs, stainless steel "anti-knockout" hinges, stainless steel threshold, weatherproof locking bolt grommet, and rubber seal system.



## Window Shutters

Leaf style steel shutters lockable internally, feature, heavy duty flush mounted alloy finger bolts with galvanised steel locking bolts, stainless steel "anti-knockout" hinges, hand grips, anti-jimmy studs, and drainage caps.

For more information on our products and services, call us on **01375 398 398**, email [sales@davlav.com](mailto:sales@davlav.com) or visit [davlav.com](http://davlav.com)

**DAVLAV**

# ECO 30' X 9' A/V OFFICE

## OFFICE

- Secure anti vandal
- Easy to look after
- Jack legs to enable level installation



Our well equipped office units provide a spacious and comfortable working environment for your staff. With thermostatic heating and PIR lighting the unit can accommodate up to 6 people working at desks. Furniture is available upon request. Please ask our hire and sales team for more information.



Dimensions	<b>9150 (L) x 2750 (W) (mm)</b>
Gross Weight	<b>3600 kg</b>
Power Connection	<b>230 V 32 AMP commando plug</b>



**PIR Sensors**  
Energy efficient PIR sensors only turn the lights on when the unit is in use, automatically switching off when no motion is detected.



**UPVC Windows**  
These double glazed tilt and turn windows come with an energy performance of 1.6 W/m<sup>2</sup>K.



**Door Closers**  
Door closers fitted to all external doors.

# Offering a pleasant & comfortable welfare environment

Our anti vandal accommodation range supplies a clean and safe environment for your staff to take their breaks. Our modern fleet is easy to use and will give your company the professional image it deserves.

## Office Area

- 2-4 double sockets at low level
- 1-2 No 2kW wall mounted convector heater
- PIR sensors

## Flooring

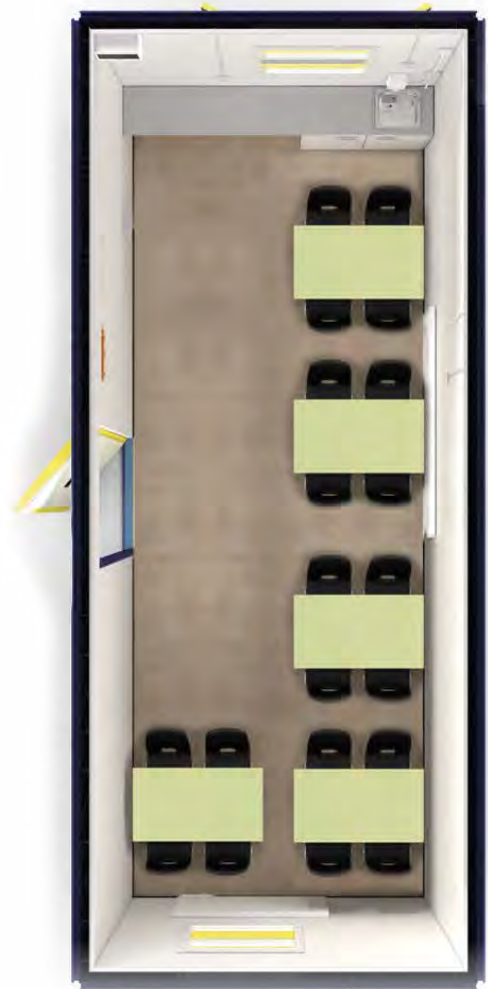
- 1.5mm vinyl polyfloor
- 1.5XL graphite 9120

## Internal Construction

- Mono ceiling board
- 3.6mm EGB10 wallboard

## External Construction

- 1.6mm corrugated fully welded side pannels
- 1.6mm flat steel fully welded roof, & steel sub floor
- UPVC tilt and turn double glazed windows
- Secure anti vandal door and shutter
- Steel underdrawn and fully insulated floor, walls, & ceiling



# Offering secure, best in class working conditions



## All Steel Construction

1.6mm corrugated fully welded side panels, 1.6mm flat steel fully welded roof & steel sub floor. UPVC tilt and turn double glazed windows. Secure anti vandal door and shutter.



## Jack Legs

The inclusion of jack legs allows the unit to be leveled quickly and simply on the most uneven of ground.



## High Security Door

With a 10 point locking system, 5 pin anti-drill Euro profile cylinder, stainless steel lever handles, anti-jimmy studs, stainless steel "anti-knockout" hinges, stainless steel threshold, weatherproof locking bolt grommet, and rubber seal system.



## Window Shutters

Leaf style steel shutters lockable internally, feature, heavy duty flush mounted alloy finger bolts with galvanised steel locking bolts, stainless steel "anti-knockout" hinges, hand grips, anti-jimmy studs, and drainage caps.

# ECO 20' X 9' A/V DRYING ROOM

## DRYING ROOM

- Secure anti vandal
- Easy to look after
- Jack legs to enable level installation

Our well equipped drying room units provide a spacious and comfortable changing environment for your staff. PIR lighting comes as standard. Downflow heaters ensure efficient drying of wet clothing. The unit can accommodate 12 - 16 people.



Dimensions	<b>6100 (L) x 2750 (W) (mm)</b>
Gross Weight	<b>1850 kg</b>
Power Connection	<b>230 V 32 AMP commando plug</b>



**PIR Sensors**  
Energy efficient PIR sensors only turn the lights on when the unit is in use, automatically switching off when no motion is detected.



**UPVC Windows**  
These double glazed tilt and turn windows come with an energy performance of 1.6 W/m<sup>2</sup>K.



**Door Closers**  
Door closers fitted to all external doors.



**Heater**  
2kW Occasional Use Drying Room Circulator.



# Offering a pleasant & comfortable welfare environment

Our anti vandal accommodation range supplies a clean and safe environment for your staff to take their breaks. Our modern fleet is easy to use and will give your company the professional image it deserves.

## Drying Room Area

- 1-2 No 2kW wall mounted downflow heater
- PIR sensors
- Slatted bench seating to the perimeter of the unit with coat hooks fitted to a baton.

## Flooring

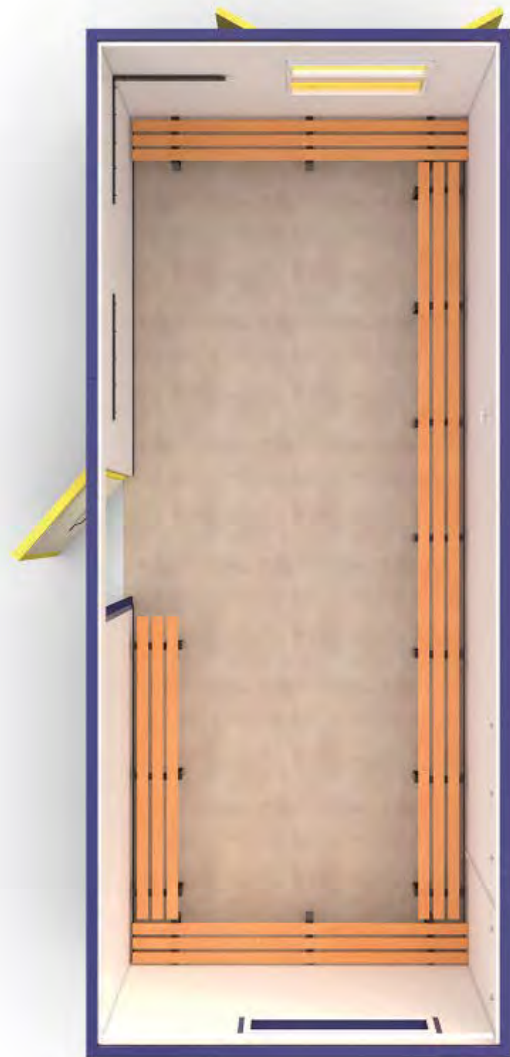
- 1.5mm vinyl polyfloor
- 1.5XL graphite 9120

## Internal Construction

- Mono ceiling board
- 3.6mm EGB10 wallboard

## External Construction

- 1.6mm corrugated fully welded side pannels
- 1.6mm flat steel fully welded roof, & steel sub floor
- UPVC tilt and turn double glazed windows
- Secure anti vandal door and shutter
- Steel underdrawn and fully insulated floor, walls, & ceiling



# Offering secure, best in class working conditions



## All Steel Construction

1.6mm corrugated fully welded side panels, 1.6mm flat steel fully welded roof & steel sub floor. UPVC tilt and turn double glazed windows. Secure anti vandal door and shutter.



## Jack Legs

The inclusion of jack legs allows the unit to be leveled quickly and simply on the most uneven of ground.



## High Security Door

With a 10 point locking system, 5 pin anti-drill Euro profile cylinder, stainless steel lever handles, anti-jimmy studs, stainless steel "anti-knockout" hinges, stainless steel threshold, weatherproof locking bolt grommet, and rubber seal system.



## Window Shutters

Leaf style steel shutters lockable internally, feature, heavy duty flush mounted alloy finger bolts with galvanised steel locking bolts, stainless steel "anti-knockout" hinges, hand grips, anti-jimmy studs, and drainage caps.

For more information on our products and services, call us on **01375 398 398**, email [sales@davlav.com](mailto:sales@davlav.com) or visit [davlav.com](http://davlav.com)

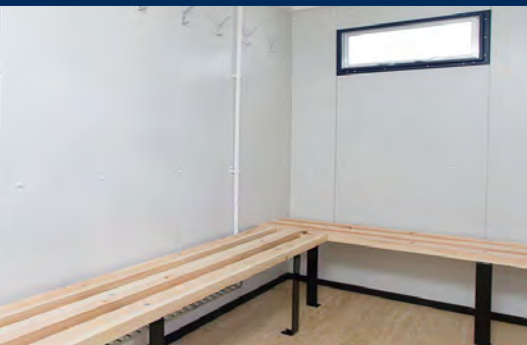
**DAVLAV**

# ECO 24' X 9' A/V DRYING ROOM

## DRYING ROOM

- Secure anti vandal
- Easy to look after
- Jack legs to enable level installation

Our well equipped drying room units provide a spacious and comfortable changing environment for your staff. PIR lighting comes as standard. Downflow heaters ensure efficient drying of wet clothing. The unit can accommodate 16 - 20 people.



Dimensions	<b>7315 (L) x 2750 (W) (mm)</b>
Gross Weight	<b>2650 kg</b>
Power Connection	<b>230 V 32 AMP commando plug</b>



**PIR Sensors**  
Energy efficient PIR sensors only turn the lights on when the unit is in use, automatically switching off when no motion is detected.



**UPVC Windows**  
These double glazed tilt and turn windows come with an energy performance of 1.6 W/m²K.



**Door Closers**  
Door closers fitted to all external doors.



**Heater**  
2kW Occasional Use Drying Room Circulator.

# Offering a pleasant & comfortable welfare environment

Our anti vandal accommodation range supplies a clean and safe environment for your staff to take their breaks. Our modern fleet is easy to use and will give your company the professional image it deserves.

## Drying Room Area

1-2 No 2kW wall mounted downflow heater

PIR sensors

Slatted bench seating to the perimeter of the unit with coat hooks fitted to a baton.

## Flooring

1.5mm vinyl polyfloor

1.5XL graphite 9120

## Internal Construction

Mono ceiling board

3.6mm EGB10 wallboard

## External Construction

1.6mm corrugated fully welded side pannels

1.6mm flat steel fully welded roof, & steel sub floor

UPVC tilt and turn double glazed windows

Secure anti vandal door and shutter

Steel underdrawn and fully insulated floor, walls, & ceiling



# Offering secure, best in class working conditions



## All Steel Construction

1.6mm corrugated fully welded side pannels, 1.6mm flat steel fully welded roof & steel sub floor. UPVC tilt and turn double glazed windows. Secure anti vandal door and shutter.



## Jack Legs

The inclusion of jack legs allows the unit to be leveled quickly and simply on the most uneven of ground.



## High Security Door

With a 10 point locking system, 5 pin anti-drill Euro profile cylinder, stainless steel lever handles, anti-jemmy studs, stainless steel "anti-knockout" hinges, stainless steel threshold, weatherproof locking bolt grommet, and rubber seal system.



## Window Shutters

Leaf style steel shutters lockable internally, feature, heavy duty flush mounted alloy finger bolts with galvanised steel locking bolts, stainless steel "anti-knockout" hinges, hand grips, anti-jemmy studs, and drainage caps.

For more information on our products and services, call us on **01375 398 398**, email [sales@davlav.com](mailto:sales@davlav.com) or visit [davlav.com](http://davlav.com)

**DAVLAV**

# ECO 30' X 9' A/V DRYING ROOM

## DRYING ROOM

- Secure anti vandal
- Easy to look after
- Jack legs to enable level installation

Our well equipped drying room units provide a spacious and comfortable changing environment for your staff. PIR lighting comes as standard. Downflow heaters ensure efficient drying of wet clothing. The unit can accommodate 20 - 24 people.



Dimensions	<b>9150 (L) x 2750 (W) (mm)</b>
Gross Weight	<b>3650 kg</b>
Power Connection	<b>230 V 32 AMP commando plug</b>



**PIR Sensors**  
Energy efficient PIR sensors only turn the lights on when the unit is in use, automatically switching off when no motion is detected.



**UPVC Windows**  
These double glazed tilt and turn windows come with an energy performance of 1.6 W/m<sup>2</sup>K.



**Door Closers**  
Door closers fitted to all external doors.



**Heater**  
2kW Occasional Use Drying Room Circulator.

# Offering a pleasant & comfortable welfare environment

Our anti vandal accommodation range supplies a clean and safe environment for your staff to take their breaks. Our modern fleet is easy to use and will give your company the professional image it deserves.

## Drying Room Area

1-2 No 2kW wall mounted downflow heater

PIR sensors

Slatted bench seating to the perimeter of the unit with coat hooks fitted to a baton.

## Flooring

1.5mm vinyl polyfloor

1.5XL graphite 9120

## Internal Construction

Mono ceiling board

3.6mm EGB10 wallboard

## External Construction

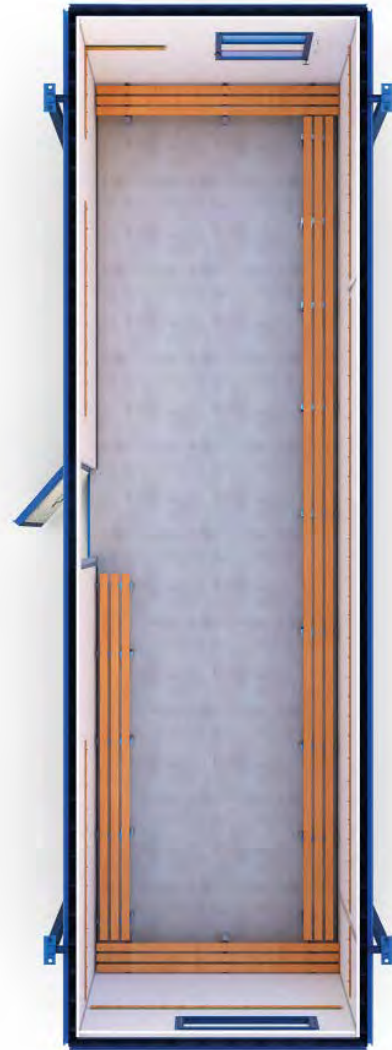
1.6mm corrugated fully welded side pannels

1.6mm flat steel fully welded roof, & steel sub floor

UPVC tilt and turn double glazed windows

Secure anti vandal door and shutter

Steel underdrawn and fully insulated floor, walls, & ceiling



# Offering secure, best in class working conditions



## All Steel Construction

1.6mm corrugated fully welded side pannels, 1.6mm flat steel fully welded roof & steel sub floor. UPVC tilt and turn double glazed windows. Secure anti vandal door and shutter.



## Jack Legs

The inclusion of jack legs allows the unit to be leveled quickly and simply on the most uneven of ground.



## High Security Door

With a 10 point locking system, 5 pin anti-drill Euro profile cylinder, stainless steel lever handles, anti-jimmy studs, stainless steel "anti-knockout" hinges, stainless steel threshold, weatherproof locking bolt grommet, and rubber seal system.



## Window Shutters

Leaf style steel shutters lockable internally, feature, heavy duty flush mounted alloy finger bolts with galvanised steel locking bolts, stainless steel "anti-knockout" hinges, hand grips, anti-jimmy studs, and drainage caps.

For more information on our products and services, call us on **01375 398 398**, email [sales@davlav.com](mailto:sales@davlav.com) or visit [davlav.com](http://davlav.com)

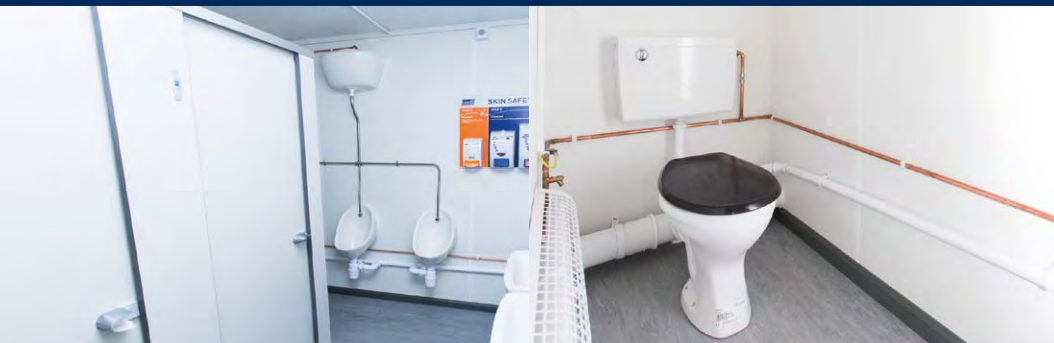
**DAVLAV**

# ECO 12' X 9' 2+1 WC

## TOILET BLOCK

- Secure anti vandal
- Easy to look after
- Jack legs to enable level installation

Our well equipped toilet blocks provide a clean and comfortable toilet facilities. Frost protection technology ensures your unit can work in the coldest of climates. Our toilet blocks are robust and vandal resistant and are cost effective to run.



Dimensions	<b>4876 (L) x 2750 (W) (mm)</b>
Gross Weight	<b>2050 kg</b>
Power Connection	<b>230 V 32 AMP commando plug</b>
Water Connection	<b>15mm push fit polypipe</b>
Foul Waste Connection	<b>110mm waste pipe</b>



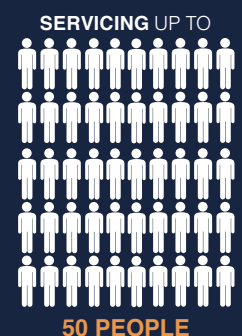
### PIR Sensors

Energy efficient PIR sensors only turn the lights on when the unit is in use, automatically switching off when no motion is detected.



### Door Closers

Door closers fitted to all external doors.



SERVICING UP TO

**50 PEOPLE**

# Offering a pleasant & comfortable welfare environment

Our anti vandal accommodation range supplies a clean and safe environment for your staff to take their breaks. Our modern fleet is easy to use and will give your company the professional image it deserves.

## Male WC Area

- Private entrance via a secure door
- Two toilet cubicles with dual flush cisterns
- Two urinals and two ceramic wash hand basins
- PIR sensor for light control, and one frost watch heater
- The area has two high level aluminium windows

## Female WC Area

- Private entrance via a secure door
- One toilet with dual flush cisterns, and one ceramic wash hand basin
- PIR sensor for light control, and one frost watch heater
- The area has two high level aluminium windows
- A 15L water heater which feeds both the male and female WC is located in this area

## Flooring

- 1.5mm vinyl polyfloor
- 1.5XL graphite 9120

## Internal Construction

- Mono ceiling board
- 3.6mm EGB10 wallboard

## External Construction

- 1.6mm corrugated fully welded side panels
- 1.6mm flat steel fully welded roof, & steel sub floor
- UPVC tilt and turn double glazed windows
- Secure anti vandal door and shutter
- Steel underdrawn and fully insulated floor, walls, & ceiling



# Offering secure, best in class working conditions



## All Steel Construction

1.6mm corrugated fully welded side panels, 1.6mm flat steel fully welded roof & steel sub floor. UPVC tilt and turn double glazed windows. Secure anti vandal door and shutter.



## Jack Legs

The inclusion of jack legs allows the unit to be leveled quickly and simply on the most uneven of ground.



## High Security Door

With a 10 point locking system, 5 pin anti-drill Euro profile cylinder, stainless steel lever handles, anti-jimmy studs, stainless steel "anti-knockout" hinges, stainless steel threshold, weatherproof locking bolt grommet, and rubber seal system.



## Window Shutters

Leaf style steel shutters lockable internally, feature, heavy duty flush mounted alloy finger bolts with galvanised steel locking bolts, stainless steel "anti-knockout" hinges, hand grips, anti-jimmy studs, and drainage caps.

For more information on our products and services, call us on **01375 398 398**, email [sales@davlav.com](mailto:sales@davlav.com) or visit [davlav.com](http://davlav.com)

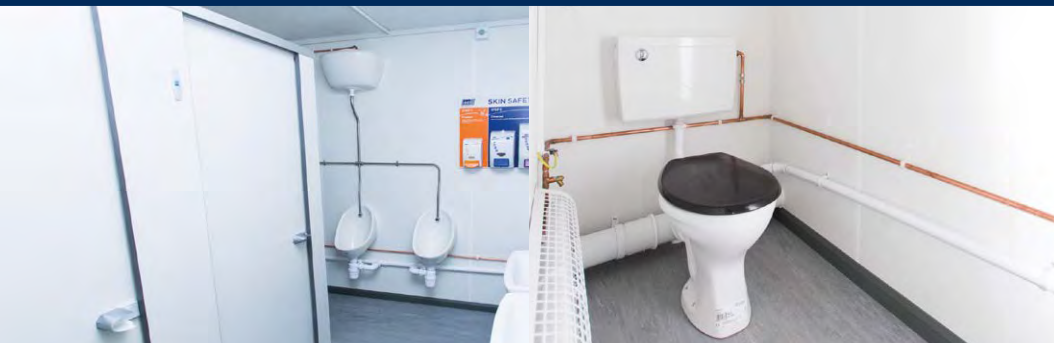
**DAVLAV**

# ECO 16' X 9' 3+1 WC

## TOILET BLOCK

- Secure anti vandal
- Easy to look after
- Jack legs to enable level installation

Our well equipped toilet blocks provide a clean and comfortable toilet facilities. Frost protection technology ensures your unit can work in the coldest of climates. Our toilet blocks are robust and vandal resistant and are cost effective to run.



Dimensions	<b>4876 (L) x 2750 (W) (mm)</b>
Gross Weight	<b>2600 kg</b>
Power Connection	<b>230 V 32 AMP commando plug</b>
Water Connection	<b>15mm push fit polypipe</b>
Foul Waste Connection	<b>110mm waste pipe</b>



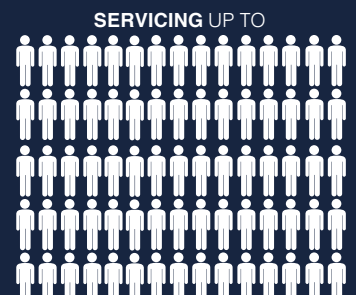
### PIR Sensors

Energy efficient PIR sensors only turn the lights on when the unit is in use, automatically switching off when no motion is detected.



### Door Closers

Door closers fitted to all external doors.



**SERVICING UP TO  
75 PEOPLE**



# Offering a pleasant & comfortable welfare environment

Our anti vandal accommodation range supplies a clean and safe environment for your staff to take their breaks. Our modern fleet is easy to use and will give your company the professional image it deserves.

## Male WC Area

- Private entrance via a secure door
- Two toilet cubicles with dual flush cisterns
- Two urinals and two ceramic wash hand basins
- PIR sensor for light control, and one frost watch heater
- The area has two high level aluminium windows

## Female WC Area

- Private entrance via a secure door
- One toilet with dual flush cisterns, and one ceramic wash hand basin
- PIR sensor for light control, and one frost watch heater
- The area has two high level aluminium windows
- A 15L water heater which feeds both the male and female WC is located in this area

## Flooring

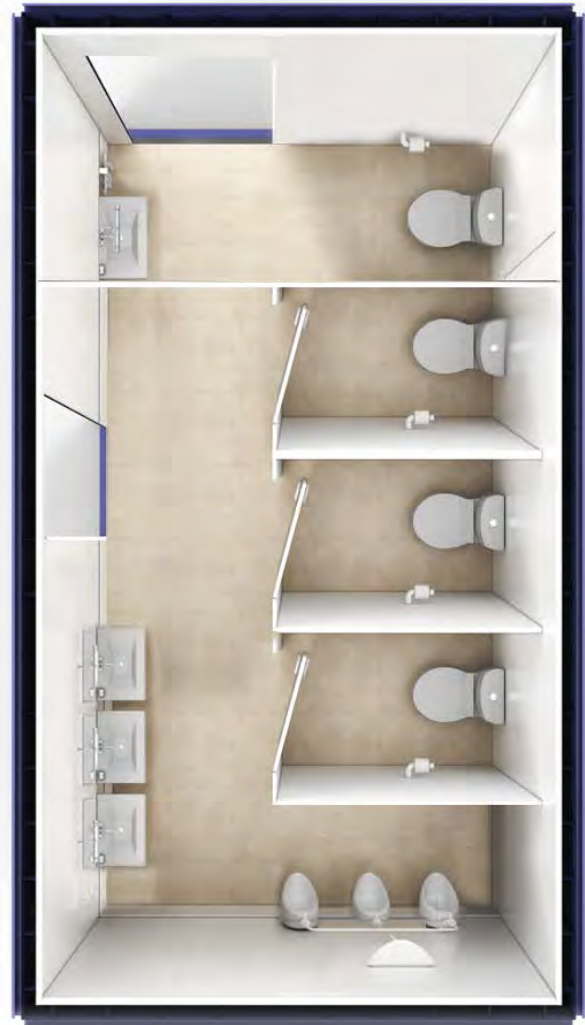
- 1.5mm vinyl polyfloor
- 1.5XL graphite 9120

## Internal Construction

- Mono ceiling board
- 3.6mm EGB10 wallboard

## External Construction

- 1.6mm corrugated fully welded side panels
- 1.6mm flat steel fully welded roof, & steel sub floor
- UPVC tilt and turn double glazed windows
- Secure anti vandal door and shutter
- Steel underdrawn and fully insulated floor, walls, & ceiling



# Offering secure, best in class working conditions



## All Steel Construction

1.6mm corrugated fully welded side panels, 1.6mm flat steel fully welded roof & steel sub floor. UPVC tilt and turn double glazed windows. Secure anti vandal door and shutter.



## Jack Legs

The inclusion of jack legs allows the unit to be leveled quickly and simply on the most uneven of ground.



## High Security Door

With a 10 point locking system, 5 pin anti-drill Euro profile cylinder, stainless steel lever handles, anti-jimmy studs, stainless steel "anti-knockout" hinges, stainless steel threshold, weatherproof locking bolt grommet, and rubber seal system.



## Window Shutters

Leaf style steel shutters lockable internally, feature, heavy duty flush mounted alloy finger bolts with galvanised steel locking bolts, stainless steel "anti-knockout" hinges, hand grips, anti-jimmy studs, and drainage caps.

For more information on our products and services, call us on **01375 398 398**, email [sales@davlav.com](mailto:sales@davlav.com) or visit [davlav.com](http://davlav.com)

**DAVLAV**

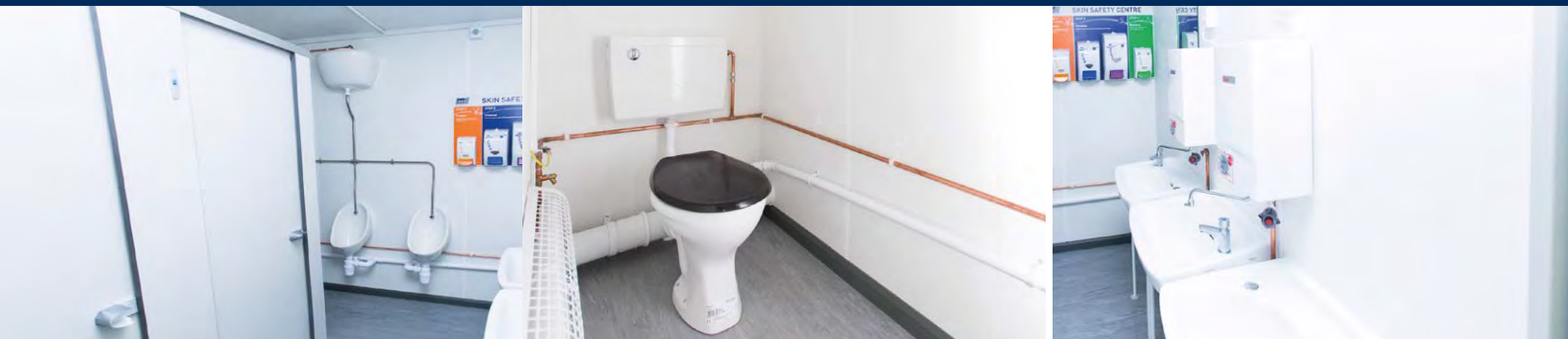
# ECO 24' X 9' 3+1+1 WC

## TOILET BLOCK

- Secure anti vandal
- Easy to look after
- Jack legs to enable level installation



Our well equipped toilet blocks provide a clean and comfortable toilet facilities. Frost protection technology ensures your unit can work in the coldest of climates. Our toilet blocks are robust and vandal resistant and are cost effective to run.



Dimensions	<b>7315 (L) x 2750 (W) (mm)</b>
Gross Weight	<b>3250 kg</b>
Power Connection	<b>230 V 32 AMP commando plug</b>
Water Connection	<b>15mm push fit polypipe</b>
Foul Waste Connection	<b>110mm waste pipe</b>



### PIR Sensors

Energy efficient PIR sensors only turn the lights on when the unit is in use, automatically switching off when no motion is detected.



### UPVC Windows

These double glazed tilt and turn windows come with an energy performance of 1.6 W/m²K.



### Door Closers

Door closers fitted to all external doors.

# Offering a pleasant & comfortable welfare environment

Our anti vandal accommodation range supplies a clean and safe environment for your staff to take their breaks. Our modern fleet is easy to use and will give your company the professional image it deserves.

## Male WC Area

- Private entrance via a secure door
- Three toilet cubicles with dual flush cisterns
- Three urinals and two ceramic wash hand basins
- PIR sensor for light control, and one frost watch heater
- The area has two high level aluminium windows

## Female WC Area

- Private entrance via a secure door
- One toilet with dual flush cisterns, and one ceramic wash hand basin
- PIR sensor for light control, and one frost watch heater
- The area has two high level aluminium windows
- A 15L water heater which feeds both the male and female WC is located in this area

## Flooring

- 1.5mm vinyl polyfloor
- 1.5XL graphite 9120

## Internal Construction

- Mono ceiling board
- 3.6mm EGB10 wallboard

## External Construction

- 1.6mm corrugated fully welded side panels
- 1.6mm flat steel fully welded roof, & steel sub floor
- UPVC tilt and turn double glazed windows
- Secure anti vandal door and shutter
- Steel underdrawn and fully insulated floor, walls, & ceiling



# Offering secure, best in class working conditions



## All Steel Construction

1.6mm corrugated fully welded side panels, 1.6mm flat steel fully welded roof & steel sub floor. UPVC tilt and turn double glazed windows. Secure anti vandal door and shutter.



## Jack Legs

The inclusion of jack legs allows the unit to be leveled quickly and simply on the most uneven of ground.



## High Security Door

With a 10 point locking system, 5 pin anti-drill Euro profile cylinder, stainless steel lever handles, anti-jimmy studs, stainless steel "anti-knockout" hinges, stainless steel threshold, weatherproof locking bolt grommet, and rubber seal system.



## Window Shutters

Leaf style steel shutters lockable internally, feature, heavy duty flush mounted alloy finger bolts with galvanised steel locking bolts, stainless steel "anti-knockout" hinges, hand grips, anti-jimmy studs, and drainage caps.

For more information on our products and services, call us on **01375 398 398**, email [sales@davlav.com](mailto:sales@davlav.com) or visit [davlav.com](http://davlav.com)

**DAVLAV**

# ECO 20' X 9' A/V CANTEEN/DRYING ROOM

## AV CANTEEN & DRYING ROOM UNIT

- Secure anti vandal
- Easy to look after
- Jack legs to enable level installation

Our Canteen / Drying rooms offer a great solution to sites with smaller numbers of workers and limited space. This combined unit accommodates up to 12 users in one handy solution. The canteens are well equipped with robust furniture and feature a useful kitchenette area with sink and work surface. The drying room is equipped with bench seating and hooks for drying clothes.



Dimensions	<b>6100 (L) x 2750 (W) (mm)</b>
Gross Weight	<b>1850 kg</b>
Power Connection	<b>230 V 32 AMP commando plug</b>
Water Connection	<b>15mm push fit poly pipe</b>
Grey Waste Connection	<b>40mm waste pipe</b>

SEATING FOR UP TO



12 PEOPLE



### Stainless Steel Sink

A large stainless sink, perfect for washing all your plates and cups.



### PIR Sensors

Energy efficient PIR sensors only turn the lights on when the unit is in use, automatically switching off when no motion is detected.



### UPVC Windows

These double glazed tilt and turn windows come with an energy performance of 1.6 W/m<sup>2</sup>K.



### Door Closers

Door closers fitted to all external doors.

# Offering a pleasant & comfortable welfare environment

Our anti vandal accommodation range supplies a clean and safe environment for your staff to take their breaks. Our modern fleet is easy to use and will give your company the professional image it deserves.

## Drying Room Area

- 1 x 2kW wall mounted downflow heater
- PIR sensors
- Slatted bench seating to the perimeter of the unit with coat hooks fitted to a baton

## Canteen Area

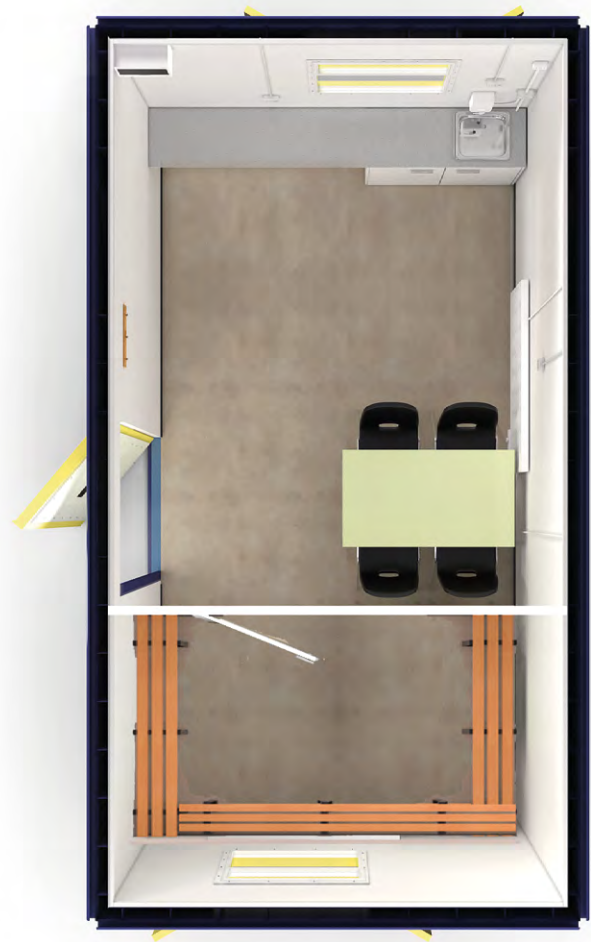
- Stainless steel sink, with double base unit and worktop
- 2 double sockets outlets, one above the worktop, one below
- 2 Additional double sockets at low level
- 1-2 No 2kW wall mounted convector heater
- PIR sensors
- 5L water heater

## Flooring

- 1.5mm vinyl polyfloor 1.5XL

## Internal Construction

- Mono ceiling board
- 3.6mm EGB10 wallboard



# Offering secure, best in class working conditions



## All Steel Construction

1.6mm corrugated fully welded side panels, 1.6mm flat steel fully welded roof & steel sub floor. UPVC tilt and turn double glazed windows. Secure anti vandal door and shutter.



## Jack Legs

The inclusion of jack legs allows the unit to be leveled quickly and simply on the most uneven of ground.



## High Security Door

With a 10 point locking system, 5 pin anti-drill Euro profile cylinder, stainless steel lever handles, anti-jimmy studs, stainless steel "anti-knockout" hinges, stainless steel threshold, weatherproof locking bolt grommet, and rubber seal system.



## Window Shutters

Leaf style steel shutters lockable internally, feature, heavy duty flush mounted alloy finger bolts with galvanised steel locking bolts, stainless steel "anti-knockout" hinges, hand grips, anti-jimmy studs, and drainage caps.

For more information on our products and services, call us on **01375 398 398**, email [sales@davlav.com](mailto:sales@davlav.com) or visit [davlav.com](http://davlav.com)

**DAVLAV**

# ECO 24' X 9' A/V CANTEEN/DRYING ROOM

## AV CANTEEN & DRYING ROOM UNIT

- Secure anti vandal
- Easy to look after
- Jack legs to enable level installation

Our Canteen / Drying rooms offer a great solution to sites with smaller numbers of workers and limited space. This combined unit accommodates up to 16 users in one handy solution. The canteens are well equipped with robust furniture and feature a useful kitchenette area with sink and work surface. The drying room is equipped with bench seating and hooks for drying clothes.



Dimensions	<b>7315 (L) x 2750 (W) (mm)</b>
Gross Weight	<b>2100 kg</b>
Power Connection	<b>230 V 32 AMP commando plug</b>
Water Connection	<b>15mm push fit poly pipe</b>
Grey Waste Connection	<b>40mm waste pipe</b>



**Stainless Steel Sink**  
A large stainless sink, perfect for washing all your plates and cups.



**PIR Sensors**  
Energy efficient PIR sensors only turn the lights on when the unit is in use, automatically switching off when no motion is detected.



**UPVC Windows**  
These double glazed tilt and turn windows come with an energy performance of 1.6 W/m²K.



**Door Closers**  
Door closers fitted to all external doors.

# Offering a pleasant & comfortable welfare environment

Our anti vandal accommodation range supplies a clean and safe environment for your staff to take their breaks. Our modern fleet is easy to use and will give your company the professional image it deserves.

## Drying Room Area

- 2 No 2kW wall mounted downflow heater
- PIR sensors
- Slatted bench seating to the perimeter of the unit with coat hooks fitted to a baton

## Canteen Area

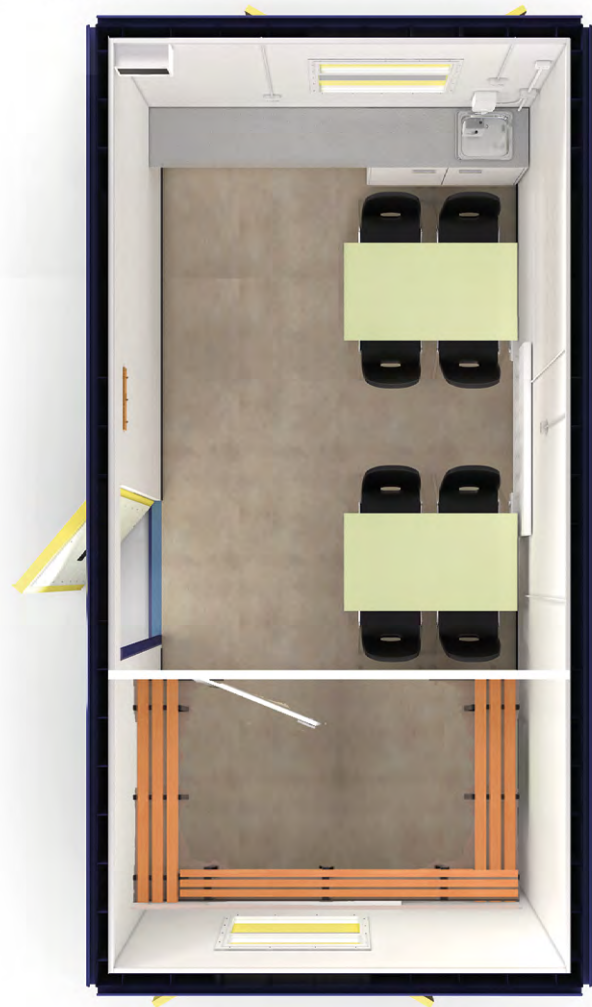
- Stainless steel sink, with double base unit and worktop
- 2 double sockets outlets, one above the worktop, one below
- 2 Additional double sockets at low level
- 1-2 No 2kW wall mounted convector heater
- PIR sensors
- 5L water heater

## Flooring

- 1.5mm vinyl polyfloor 1.5XL

## Internal Construction

- Mono ceiling board
- 3.6mm EGB10 wallboard



# Offering secure, best in class working conditions



## All Steel Construction

1.6mm corrugated fully welded side panels, 1.6mm flat steel fully welded roof & steel sub floor. UPVC tilt and turn double glazed windows. Secure anti vandal door and shutter.



## Jack Legs

The inclusion of jack legs allows the unit to be leveled quickly and simply on the most uneven of ground.



## High Security Door

With a 10 point locking system, 5 pin anti-drill Euro profile cylinder, stainless steel lever handles, anti-jimmy studs, stainless steel "anti-knockout" hinges, stainless steel threshold, weatherproof locking bolt grommet, and rubber seal system.



## Window Shutters

Leaf style steel shutters lockable internally, feature, heavy duty flush mounted alloy finger bolts with galvanised steel locking bolts, stainless steel "anti-knockout" hinges, hand grips, anti-jimmy studs, and drainage caps.

For more information on our products and services, call us on **01375 398 398**, email [sales@davlav.com](mailto:sales@davlav.com) or visit [davlav.com](http://davlav.com)

**DAVLAV**

# ECO 30' X 9' A/V CANTEEN/DRYING ROOM

## AV CANTEEN & DRYING ROOM UNIT

- Secure anti vandal
- Easy to look after
- Jack legs to enable level installation

Our Canteen / Drying rooms offer a great solution to sites with smaller numbers of workers and limited space. This combined unit accommodates up to 24 users in one handy solution. The canteens are well equipped with robust furniture and feature a useful kitchenette area with sink and work surface. The drying room is equipped with bench seating and hooks for drying clothes.



Dimensions	<b>9150 (L) x 2750 (W) (mm)</b>
Gross Weight	<b>3600 kg</b>
Power Connection	<b>230 V 32 AMP commando plug</b>
Water Connection	<b>15mm push fit poly pipe</b>
Grey Waste Connection	<b>40mm waste pipe</b>



**Stainless Steel Sink**  
A large stainless sink, perfect for washing all your plates and cups.



**PIR Sensors**  
Energy efficient PIR sensors only turn the lights on when the unit is in use, automatically switching off when no motion is detected.



**UPVC Windows**  
These double glazed tilt and turn windows come with an energy performance of 1.6 W/m²K.



**Door Closers**  
Door closers fitted to all external doors.



# Offering a pleasant & comfortable welfare environment

Our anti vandal accommodation range supplies a clean and safe environment for your staff to take their breaks. Our modern fleet is easy to use and will give your company the professional image it deserves.

## Drying Room Area

- 2 No 2kW wall mounted downflow heater
- PIR sensors
- Slatted bench seating to the perimeter of the unit with coat hooks fitted to a baton

## Canteen Area

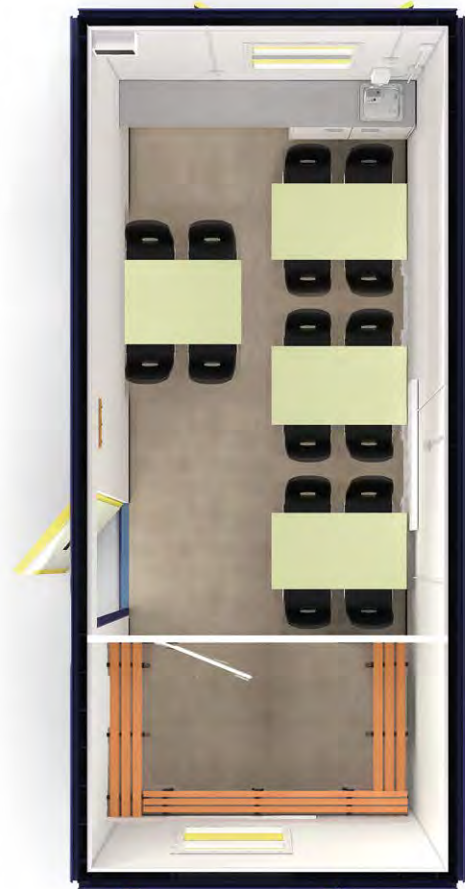
- Stainless steel sink, with double base unit and worktop
- 2 double sockets outlets, one above the worktop, one below
- 2 Additional double sockets at low level
- 1-2 No 2kW wall mounted convector heater
- PIR sensors
- 5L water heater

## Flooring

- 1.5mm vinyl polyfloor 1.5XL

## Internal Construction

- Mono ceiling board
- 3.6mm EGB10 wallboard



# Offering secure, best in class working conditions



## All Steel Construction

1.6mm corrugated fully welded side panels, 1.6mm flat steel fully welded roof & steel sub floor. UPVC tilt and turn double glazed windows. Secure anti vandal door and shutter.



## Jack Legs

The inclusion of jack legs allows the unit to be leveled quickly and simply on the most uneven of ground.



## High Security Door

With a 10 point locking system, 5 pin anti-drill Euro profile cylinder, stainless steel lever handles, anti-jimmy studs, stainless steel "anti-knockout" hinges, stainless steel threshold, weatherproof locking bolt grommet, and rubber seal system.



## Window Shutters

Leaf style steel shutters lockable internally, feature, heavy duty flush mounted alloy finger bolts with galvanised steel locking bolts, stainless steel "anti-knockout" hinges, hand grips, anti-jimmy studs, and drainage caps.

For more information on our products and services, call us on **01375 398 398**, email [sales@davlav.com](mailto:sales@davlav.com) or visit [davlav.com](http://davlav.com)

**DAVLAV**

# 8' STORAGE CONTAINER

## STORAGE UNIT

- Vandal resistant
- Easily transported
- Easily accessible

Our 8' stores are the perfect solution to providing a safe and secure space for your valuables and goods. The 8' model is great for fitting in small areas on sites, retail areas or trading estates.



Dimensions	2440 (L) x 2440 (W) (mm)
Gross Weight	1000 kg
Locking	Padlocks available upon request



For more information on our products and services, call us on **01375 398 398**, email [sales@davlav.com](mailto:sales@davlav.com) or visit [davlav.com](http://davlav.com)

# 10' STORAGE CONTAINER

## STORAGE UNIT

- Vandal resistant
- Easily transported
- Easily accessible

Our 10' stores are the perfect solution to providing a safe and secure space for your valuables and goods. The 10' model is great for fitting in small areas on sites, retail areas or trading estates.



Dimensions	3050 (L) x 2300 (W) (mm)
Gross Weight	1200 kg
Locking	Padlocks available upon request



For more information on our products and services, call us on **01375 398 398**, email [sales@davlav.com](mailto:sales@davlav.com) or visit [davlav.com](http://davlav.com)

# 20' STORAGE CONTAINER

## STORAGE UNIT

- Vandal resistant
- Easily transported
- Easily accessible

Our 20' stores are the perfect solution to providing a safe and secure space for your valuables and goods. The 20' model is great for fitting in small areas on sites, retail areas or trading estates.



Dimensions	6100 (L) x 2300(W) (mm)
Gross Weight	1800 kg
Locking	Padlocks available upon request



For more information on our products and services, call us on **01375 398 398**, email [sales@davlav.com](mailto:sales@davlav.com) or visit [davlav.com](http://davlav.com)

# MULTI BAY BOOT WASH STATION

## BOOT WASH STATION

- Easy install, standalone boot cleaning unit
- Anti-slip steel foot platform with removable grid
- Reinforced rubber water hose and sprinkle nozzles
- Available in 2 Bay, 3 Bay and 5 Bay formations



Built by Davlav in the UK, the wash stations are available in 2 bay, 3 bay and 5 bay options as standard. We can even build the wash stations to meet your own specifications if desired, so we are able to cater for any construction site. With a removable grid for easy cleaning, these wash stations offer an extremely effective solution to the problem of muddy boots in clean areas. They are able to run off mains water or we can supply them with their own water tank and pump. We are even able to offer a service to service the station and top up the water supply.



Bay	2	3	5
Dimensions	1070 (W) x 1170 (H) x 575 (D) (mm)	2000 (W) x 1170 (H) x 575 (D) (mm)	2670 (W) x 1170 (H) x 575 (D) (mm)
Weight	150kg	200kg	300kg
Tray Depth	250mm	250mm	250mm
Water Connection	25mm water connection inlet	25mm water connection inlet	25mm water connection inlet
Grey Waste Connection	3" waste outlet	3" waste outlet	3" waste outlet
Minimum Hire Period	1 week	1 week	1 week

### Key Features

- Available with two, three or five bays
- Easy install, standalone boot cleaning unit
- Anti-slip steel foot platform with removable grid
- Reinforced rubber water hose and sprinkle nozzles

### Optional Extras

- Water bowser and pump
- Spray wash nozzle attachment

### Useful Information

- Steel construction
- Fork pockets
- 25mm water connection inlet
- 3" waste outlet
- Heavy duty lifting/lashing rings
- Removable ambideck foot grate for easy clear of dirt
- Steel wash brush hangers (1 per bay)
- High quality rubber flexible hose
- High quality plastic wash brush head (Pivoting, quick release hose lock fitting)

# STEEL EFFLUENT TANKS

## EFFLUENT TANKS

- Robust steel construction
- 500, 800 or 2000 gallon capacity
- Tank emptying service available



Robust, secure and safe waste tanks suitable for a variety of situations. Davlav's Waste Tanks are of steel construction and have capacity for 500, 800 and 2000 gallons of waste, with inlets at each corner for connecting and emptying. They can be buried or sited underneath toilet blocks and canteens. We offer a first class tank emptying service. From daily to weekly, we can manage your sites waste programme.



## 500 GALLON EFFLUENT TANK

Length	3050 mm
Width	2450 mm
Depth	300 mm
Capacity	500 gallons

## 800 GALLON EFFLUENT TANK

Length	3650 mm
Width	2450 mm
Depth	300 mm
Capacity	800 gallons

## 2000 GALLON EFFLUENT TANK

Length	4570 mm
Width	3050 mm
Depth	300 mm
Capacity	2000 gallons



Sturdy steel construction



Can be cited under kitchens, canteens, toilet blocks and welfare units



Disposable via registered treatment facilities



Minimal disruption to site

For more information on our products and services, call us on **01375 398 398**, email [sales@davlav.com](mailto:sales@davlav.com) or visit [davlav.com](http://davlav.com)

---

# WORLD-CLASS TURNKEY MODULAR BUILDING SERVICE

---

Temporary & Permanent Modular Building Solutions

*From concept to completion  
and everything inbetween*



MaxiSpace.com



POWERED BY  DAVLAV

*“ The Maxi Space modular team worked professionally and efficiently in order to get the building constructed in time, as it was needed in an emergency. All of the staff were polite and courteous and worked well with the contractor teams on site. “*

Granite Farm



**EXPERIENCE**

Over 25 years' experience in the welfare and modular building industry.

**QUALITY**

Quality service, product & workmanship is our number one goal.

**FAMILY RUN**

Hands on family involvement guarantees quality and attention to detail throughout.

**FOCUSED**

A dedicated project manager will see your order through from start to finish.

**FIRST CLASS SERVICE**

We love what we do and it shows.

# INTRODUCING MAXI SPACE TEMPORARY & PERMANENT MODULAR BUILDINGS TO HIRE OR PURCHASE

**The unique modular framework of Maxi Space allows you to maximise the space of the footprint you are building on.**

From accommodation for construction sites, to creating permanent spaces for living, and working, we are able to provide high quality, durable modular buildings to meet your specification and budget.

From concept to construction, each of our modular buildings are built with innovation and sustainability at

the core. Whether you opt for one, two or three storey modular building systems, our team of experts apply their creative flair and technical expertise to produce unique, cutting edge solutions that maximise the space you can create from your building footprint.

Maxi Space is powered by Davlav - one of the largest welfare and site accommodation companies in the UK. With over 25 years experience, Davlav is a name that is synonymous with quality and service and is trusted throughout the construction industry.

**Expandable & adaptable any time**



**Low operating costs**





# THE BENEFITS OF MODULAR

**Modular buildings are prefabricated sectional structures which arrive on site in units that are then secured together to create your finished build.**

Built in state-of-the-art factory facilities, our modular units can help reduce an overall build time by up to 50% compared with conventional building techniques. They also give more control over quality, budgets and completion dates. Weather conditions also pose no issue as the modules are built in a factory.

Each building is bespoke designed and fabricated to suit your requirements. From picking the types of windows and doors, through to the wall finish and building colour, our unique panel system gives complete flexibility to the build. It also gives the option to allow for last minute changes to the building should you wish to change your mind.

Energy saving options



Sophisticated security fittings



**Quicker build time**  
Up to 50% faster than traditional build.



**Lower build cost**  
Compared to traditional building methods.



**Wide range of finishes**  
Inside & out we make your unit exactly how you want it.



**Quality product**  
Tighter quality controlled build programme.

## BENEFITS AT A GLANCE:

- ✓ Low operating costs due to the use of high-quality materials and insulation variants
- ✓ Expandable and adaptable at any time
- ✓ Individual room designs in various sizes
- ✓ Ready for occupancy within a few weeks
- ✓ Buildings up to 3 storeys high
- ✓ High-quality heat and sound insulation guarantee comfort
- ✓ Double glazed PVC windows with integrated roller shutters

# MODULAR IN ACTION

We have over 25 years experience in providing both the private and public sector with modular buildings and welfare. We can provide:

- Construction site offices
- General offices
- Depot building
- Healthcare facilities
- Marketing suites
- Toilet blocks
- Workshops
- Staff accommodation
- Show and sales rooms
- Car sales rooms
- Classrooms
- Nurseries
- Sport clubs & changing rooms

Actually whatever you want extra high-quality space for, we can probably design and build it for you.

Individual room designs in various sizes



High-quality materials & insulation variants



# GREEN TECHNOLOGY AS STANDARD

We push energy efficient construction methods, with the usage of recyclable materials and environmental manufacturing methods. The production of our modular containers is carried out in accordance with the environment and quality standards (Green Technology).

## GREEN technology stands for

- Selection and use of recyclable materials
- Energy efficient and environmentally friendly production in certified, European production plants
- Continuous quality inspections and environmental audits in the production plants
- Long product life

The production of portable and sanitary cabins is undertaken to the strict environmental and quality standards.

Use of recyclable materials



Environmentally friendly



“ Maxi Space really listened and understood our requirements. They designed and built a sporting facility that truly exceeded expectations. It’s amazing! The quality of the building is first class and has given us a platform from which to grow on over time.

Thank you Maxi Space “

Brentwood Rugby Club

## DESIGNING AND CREATING YOUR PERFECT SOLUTION

Creating your bespoke modular building couldn't be easier...

### STEP 1

#### PLAN YOUR LAYOUT

Design your space in terms of rooms, floors, bathrooms, kitchens etc

### STEP 2

#### SELECT WALL PANELS AND WINDOWS

Pick the specification of the windows, doors, roof and wall panels to suit your needs and budget

### STEP 3

#### PICK COLOUR AND FINISH

Select the colour and finish of the buildings walls

### STEP 4

#### SELECT FIXTURES AND FITTINGS

Choose your doors, taps, floor tiles, coat hooks etc

### STEP 5

#### CHOOSE YOUR FURNISHING

From desks to work benches, lockers to reception desks, choose from our range of furnishings or you can choose to pick your own

# IN SAFE HANDS

Maxi Space is one of the UK's leading suppliers of modular building solutions.

We offer a full turnkey service taking care of every aspect of a project from initial concept right through to completion.



#### 1. CONSULTATION

Meet with our experts to discuss the goals and ambitions of your build and take advantage of their knowledge and experience.

#### 2. ON SITE SURVEY

We will carry out a full site survey to make sure what we say is possible can be achieved.

#### 3. DRAWINGS & PLANS

Detailed CAD drawings and plans are produced to ensure every aspect of your build has been fully thought out.

#### 4. BUILD & INSTALLATION

The modules are built off site and our team of expert fitters will construct the modular building and ensure its perfect when we hand over the keys.

#### 5. PROJECT MANAGEMENT

At all times of the project, your dedicated project manager will be overseeing the operation and will keep you informed of the progress.

#### 6. AFTER SALES CARE

We are there long after the build to ensure you are happy with the product.

#### 7. ON GOING SUPPORT

We are able to offer ongoing support services to your modular building. From yearly fire alarm testing through to general repairs and maintenance, we can build a support package to meet your needs.

### GET IN TOUCH

If you would like to book a **free consultation** to scope out your idea for a modular build, then please give one of our experts a call on **+44 (0) 333 444 0290**



POWERED BY  **DAVLAV**

**Davro House,**  
Granites Farm, Granites Chase  
Billericay, Essex, United Kingdom.  
CM11 2UQ

**+44 (0) 333 444 0290**  
**sales@maxispace.com**

**MaxiSpace.com**

Maxi Space is a brand name of the Davro Group